

**Michigan and Wisconsin 14 - 18 June 2018
Annual Exceedance Probabilities (AEPs) for the Worst Case 6-hour Rainfall**

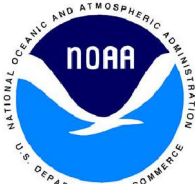
**Hydrometeorological Design Studies Center
Office of Water Prediction, National Weather Service
National Oceanic and Atmospheric Administration**

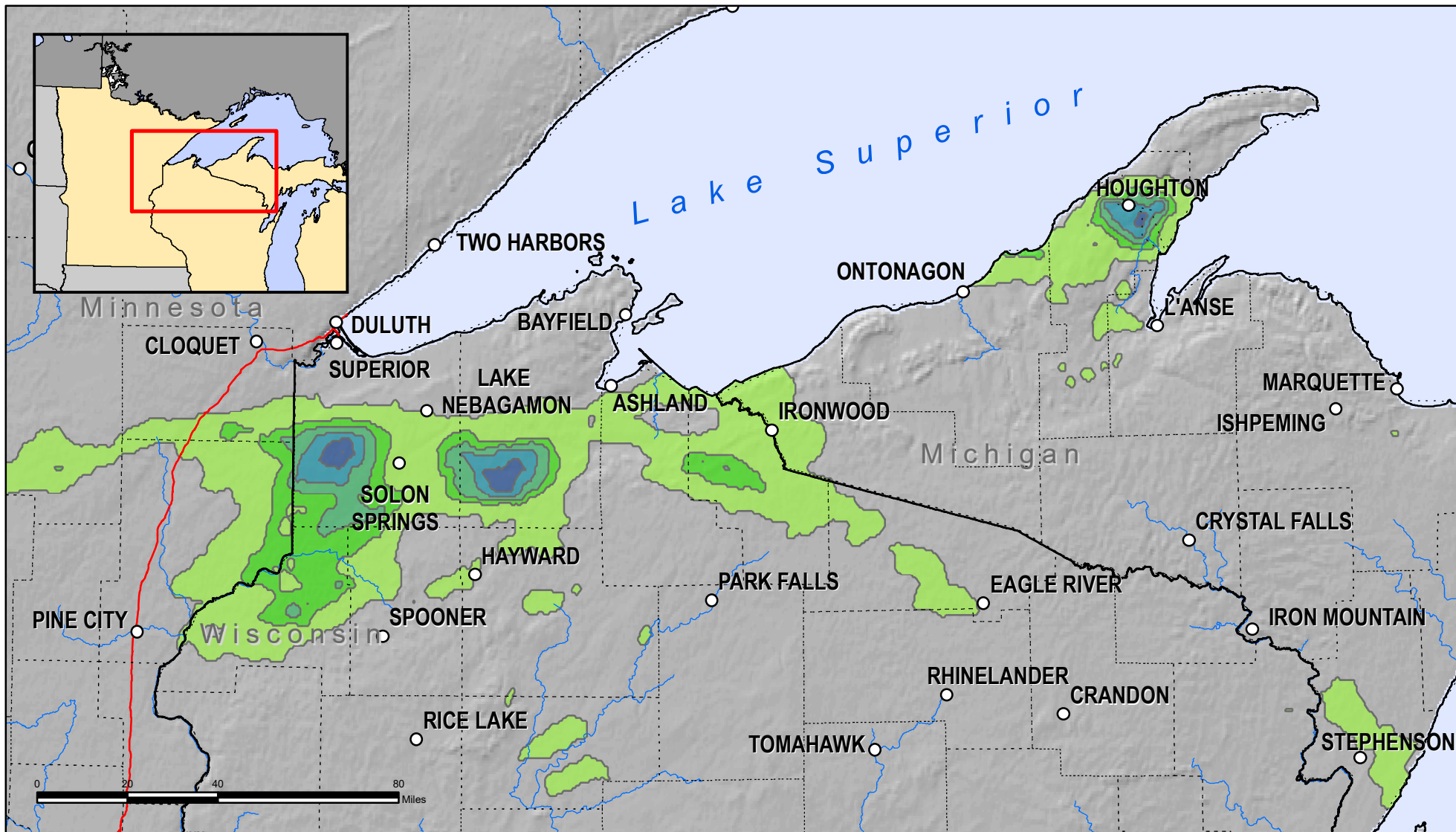
<http://www.nws.noaa.gov/ohd/hdsc/>

Created 19 June 2018

Rainfall frequency estimates are from NOAA Atlas 14
Rainfall values come from 1-hour Stage IV data.

- 1/50 - 1/10
- 1/100 - 1/50
- 1/200 - 1/100
- 1/500 - 1/200
- 1/1000 - 1/500
- < 1/1000





**Michigan and Wisconsin 14 - 18 June 2018
Annual Exceedance Probabilities (AEPs) for the Worst Case 24-hour Rainfall**

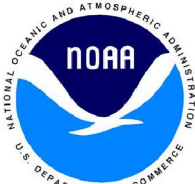
**Hydrometeorological Design Studies Center
Office of Water Prediction, National Weather Service
National Oceanic and Atmospheric Administration**

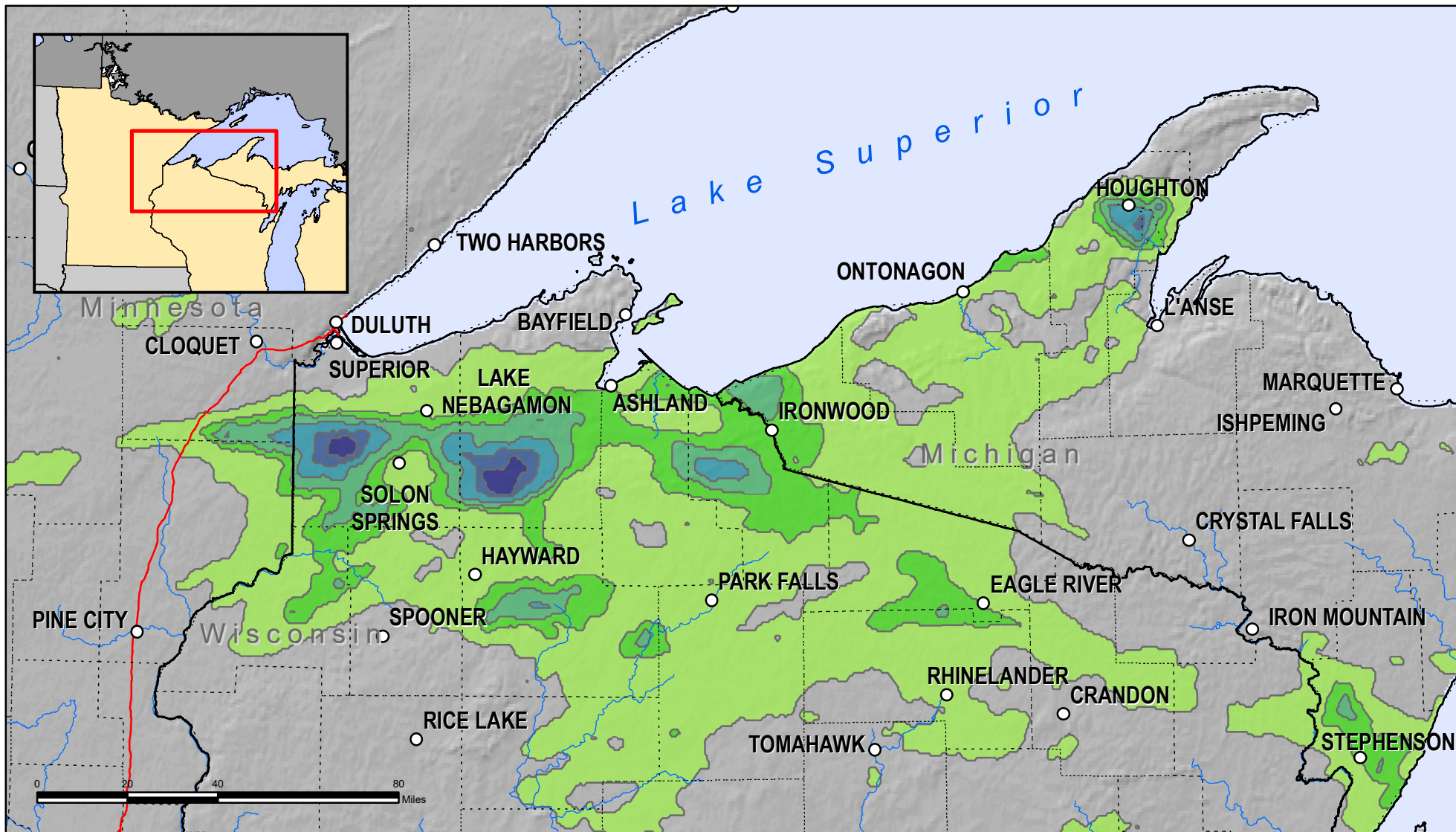
<http://www.nws.noaa.gov/ohd/hdsc/>

Created 19 June 2018

Rainfall frequency estimates are from NOAA Atlas 14
Rainfall values come from 1-hour Stage IV data.

- 1/50 - 1/10
- 1/100 - 1/50
- 1/200 - 1/100
- 1/500 - 1/200
- 1/1000 - 1/500
- < 1/1000





**Michigan and Wisconsin 14 - 18 June 2018
Annual Exceedance Probabilities (AEPs) for the Worst Case 72-hour Rainfall**

**Hydrometeorological Design Studies Center
Office of Water Prediction, National Weather Service
National Oceanic and Atmospheric Administration**

<http://www.nws.noaa.gov/ohd/hdsc/>

Created 19 June 2018

Rainfall frequency estimates are from NOAA Atlas 14
Rainfall values come from 1-hour Stage IV data.

- 1/50 - 1/10
- 1/100 - 1/50
- 1/200 - 1/100
- 1/500 - 1/200
- 1/1000 - 1/500
- < 1/1000

