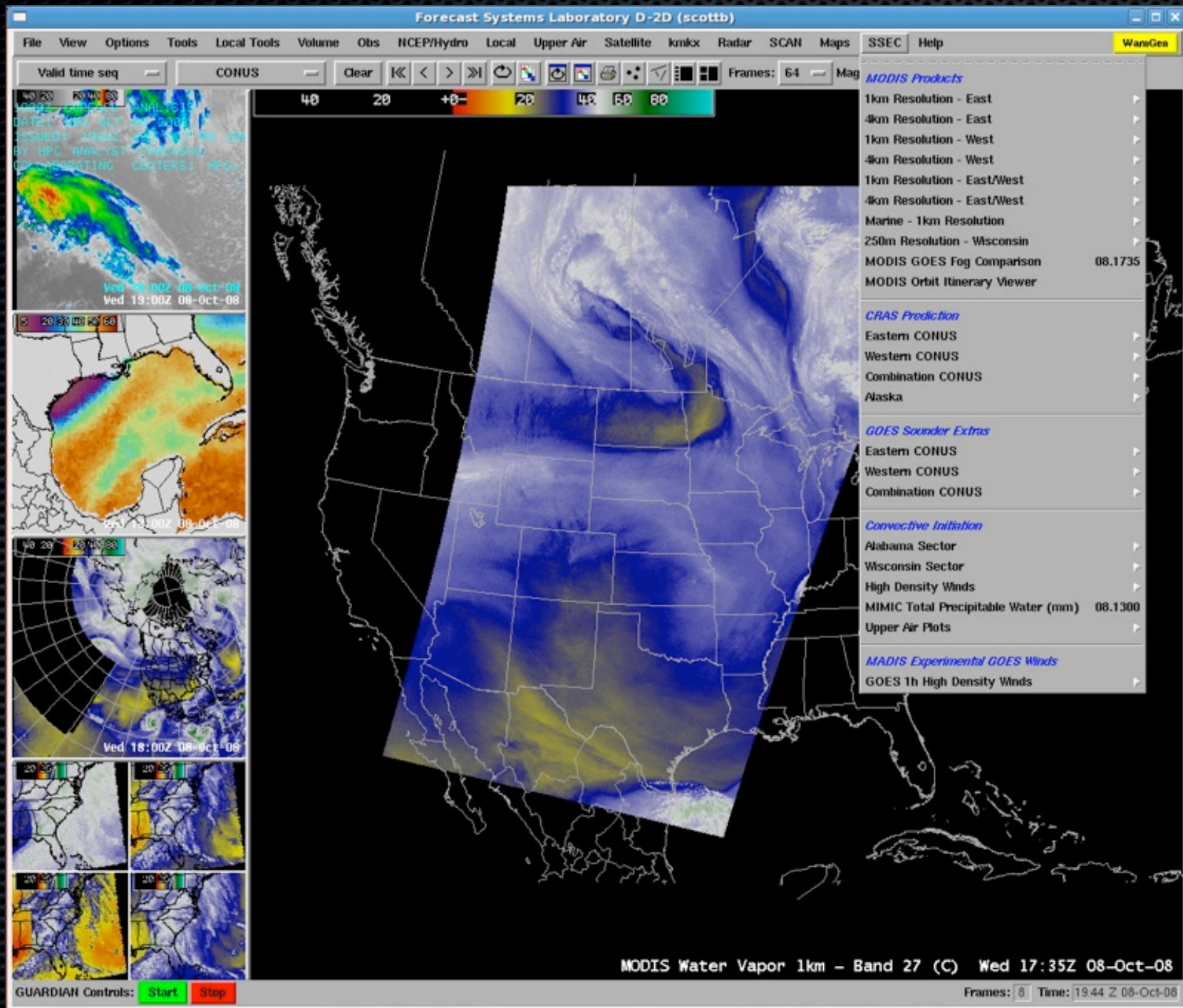


# CIMSS Satellite Products in AWIPS



CIMSS Satellite Blog

http://cimss.ssec.wisc.edu/goes/blog/ RSS Google

# CIMSS Satellite Blog

A weblog of meteorological satellite imagery relevant to current weather events

---

## Enhanced-V storm top signature over Nebraska

May 13th, 2009

MODIS 11.0 μm IR image + storm reports + cloud-to-ground lightning data

A well-defined "enhanced-v" storm top signature was seen on MODIS 11.0 μm IR window image (*above*) over Nebraska around 08:09 UTC (3:09 am local time) on 13 May 2009. The magnitude of the cold/warm cloud top temperature couplet was rather large (-72° C to -50° C) for this particular enhanced-v feature. Also note the presence of a cloud-top packet of gravity waves, which could be seen propagating westward away from region of the enhanced-v signature. Hail as large as 1.0 inch in diameter was being reported, and there were a large number of both negative and

Search

**Pages**

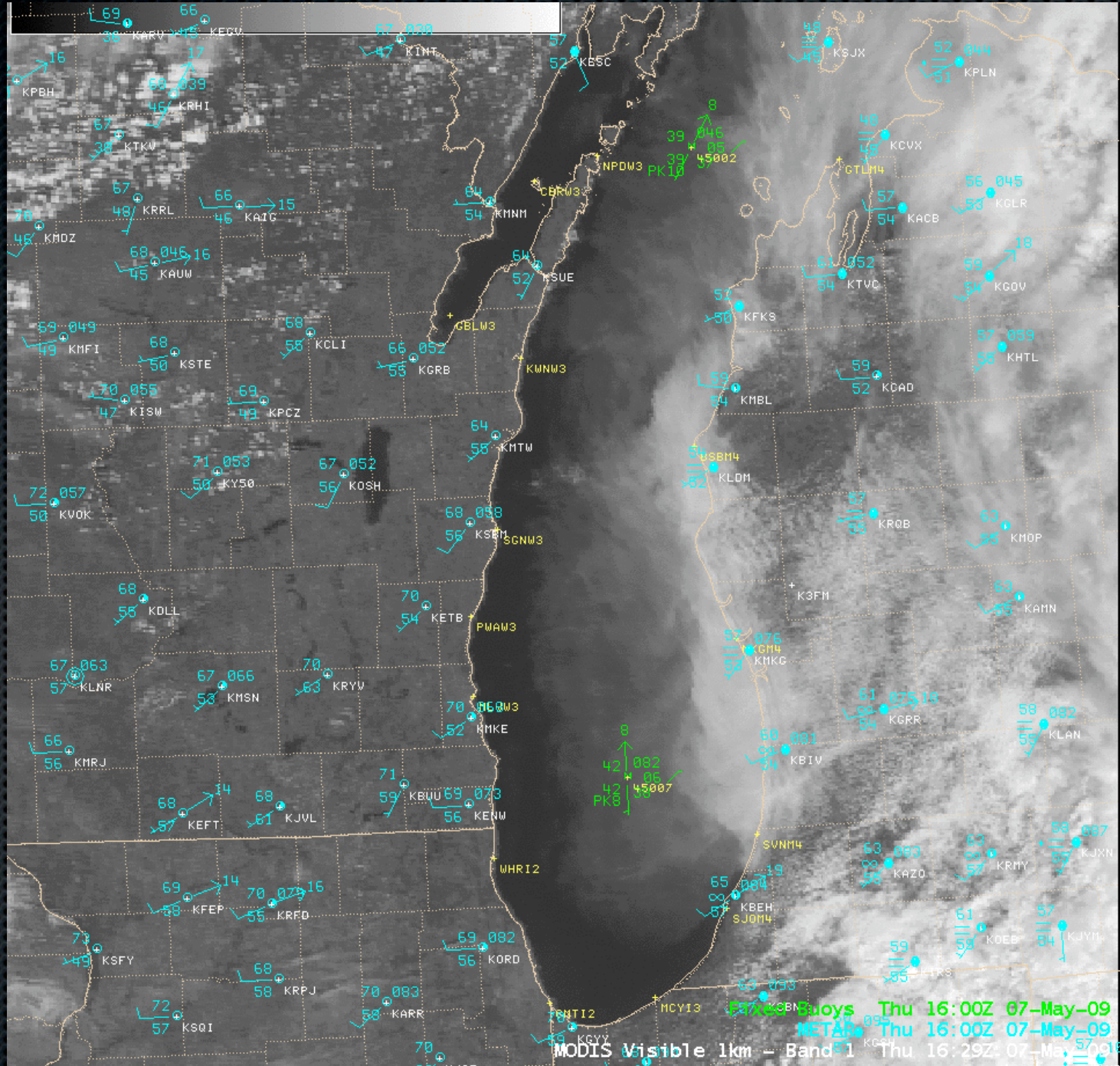
- » [About this site](#)
- » [CIMSS "Satellite Proving Ground"](#)
- » [Contact us](#)
- » [Mobile users](#)
- » [SatePedia](#)
- » [VISIT / SHyMet Training Topics](#)

**Archives**

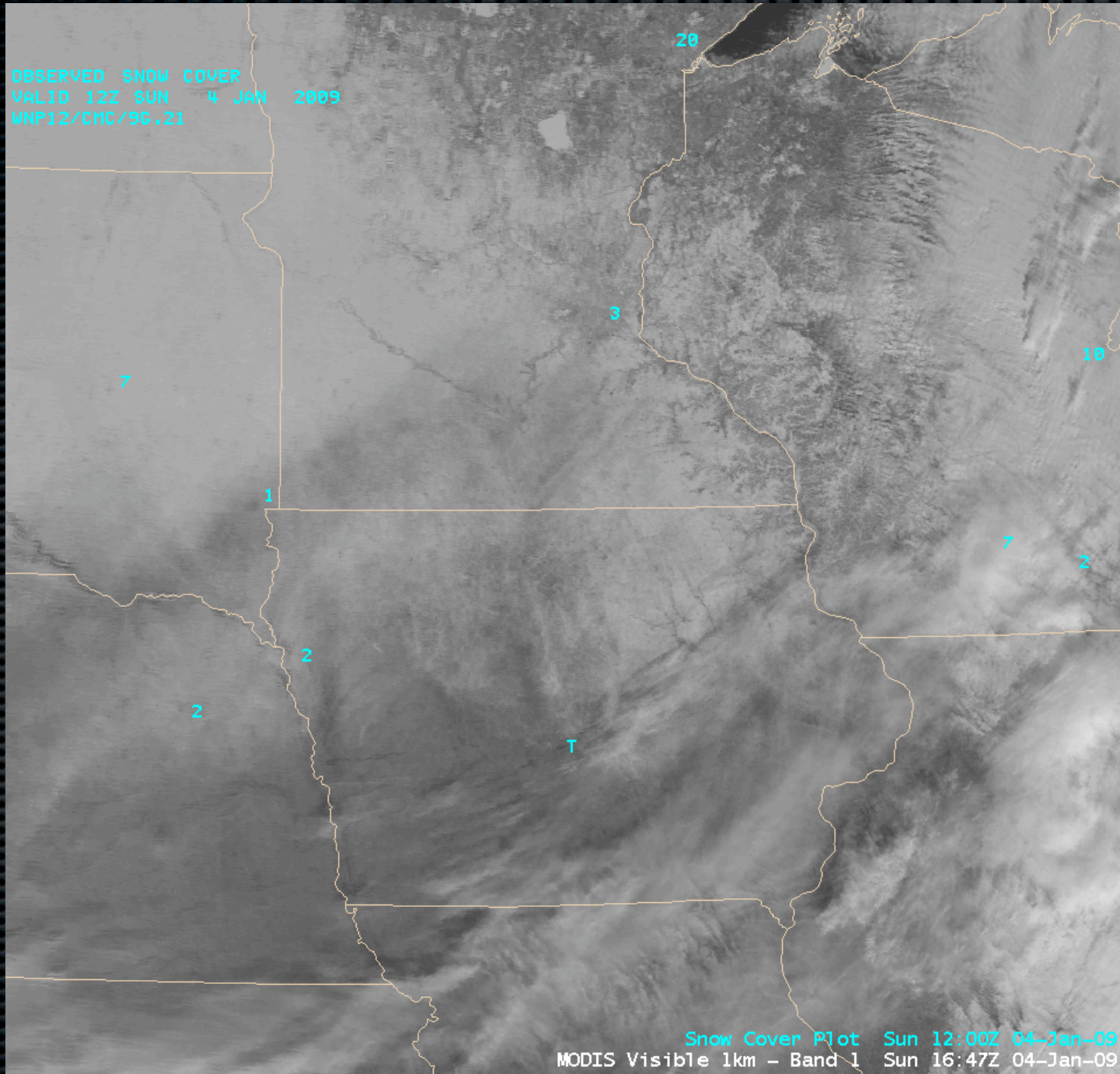
- » [May 2009](#)
- » [April 2009](#)
- » [March 2009](#)
- » [February 2009](#)
- » [January 2009](#)
- » [December 2008](#)
- » [November 2008](#)
- » [October 2008](#)
- » [September 2008](#)
- » [August 2008](#)
- » [July 2008](#)
- » [June 2008](#)
- » [May 2008](#)
- » [April 2008](#)
- » [March 2008](#)
- » [February 2008](#)
- » [January 2008](#)
- » [December 2007](#)
- » [November 2007](#)
- » [October 2007](#)
- » [September 2007](#)
- » [August 2007](#)
- » [July 2007](#)
- » [June 2007](#)
- » [May 2007](#)
- » [April 2007](#)

cimss.ssec.wisc.edu/goes/blog

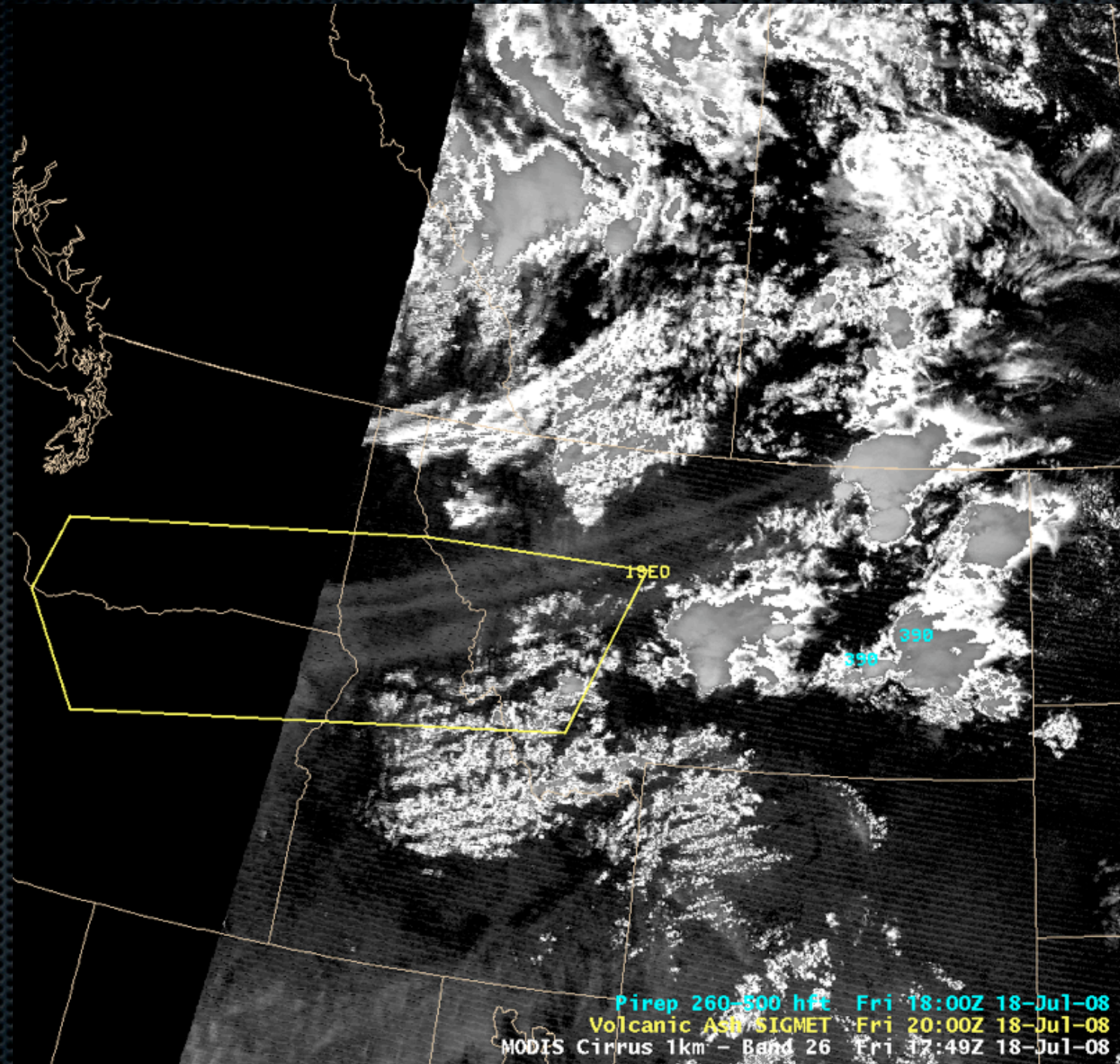
# MODIS Visible Channel



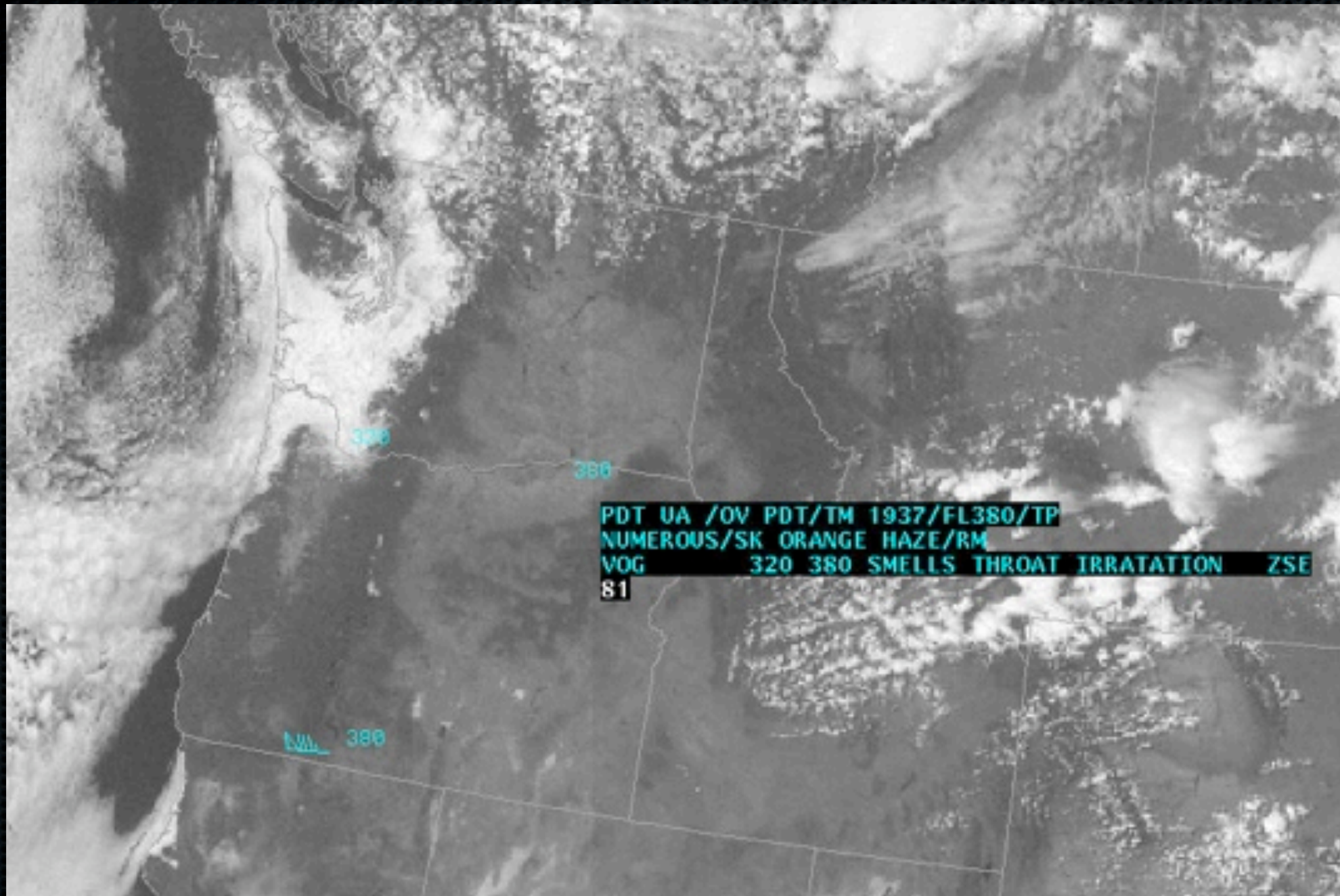
# MODIS 2.1μm Snow/Ice Channel



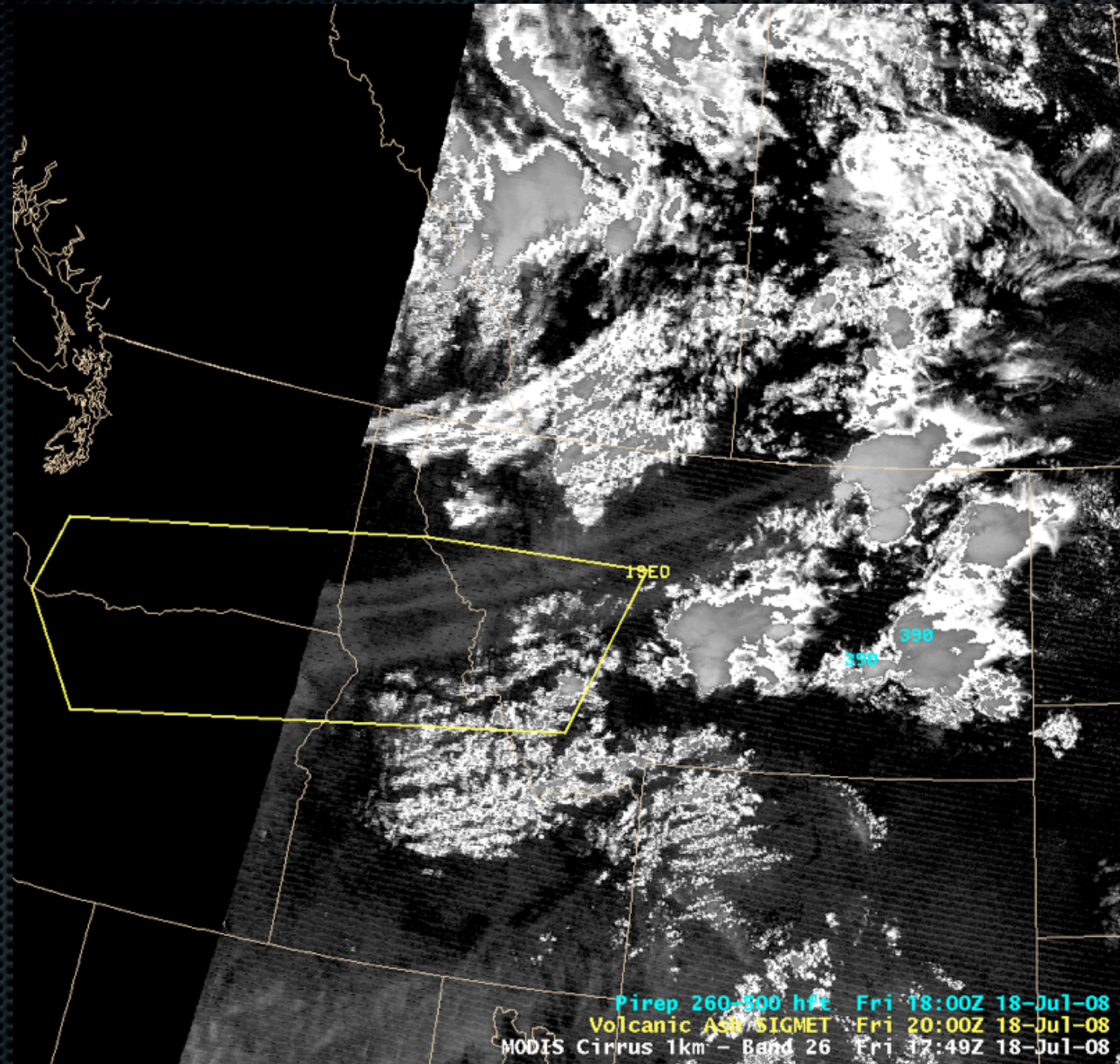
# MODIS 1.6 $\mu$ m Cirrus Channel

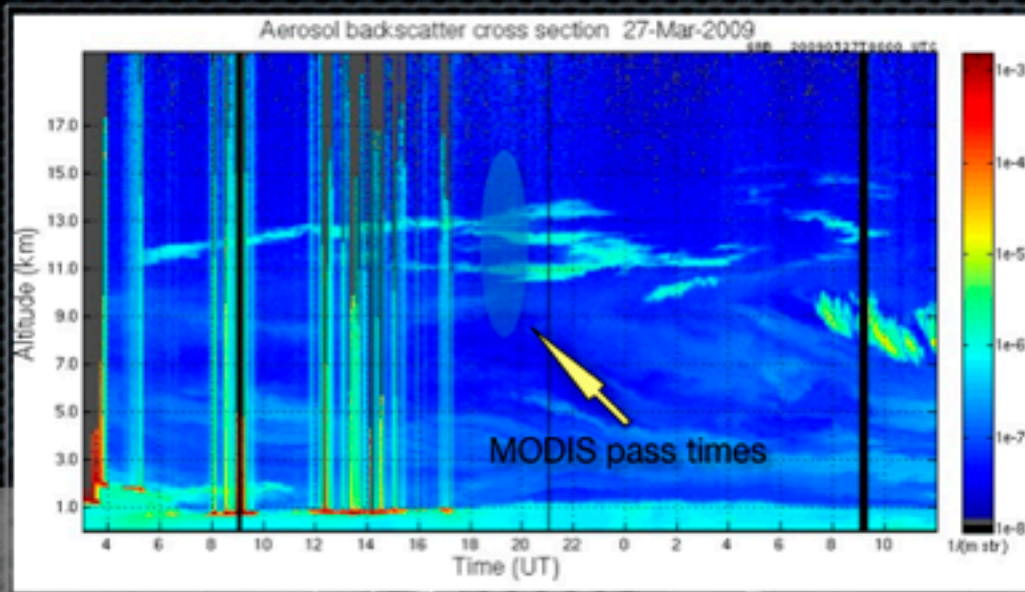


# MODIS Visible Channel + PIREPs

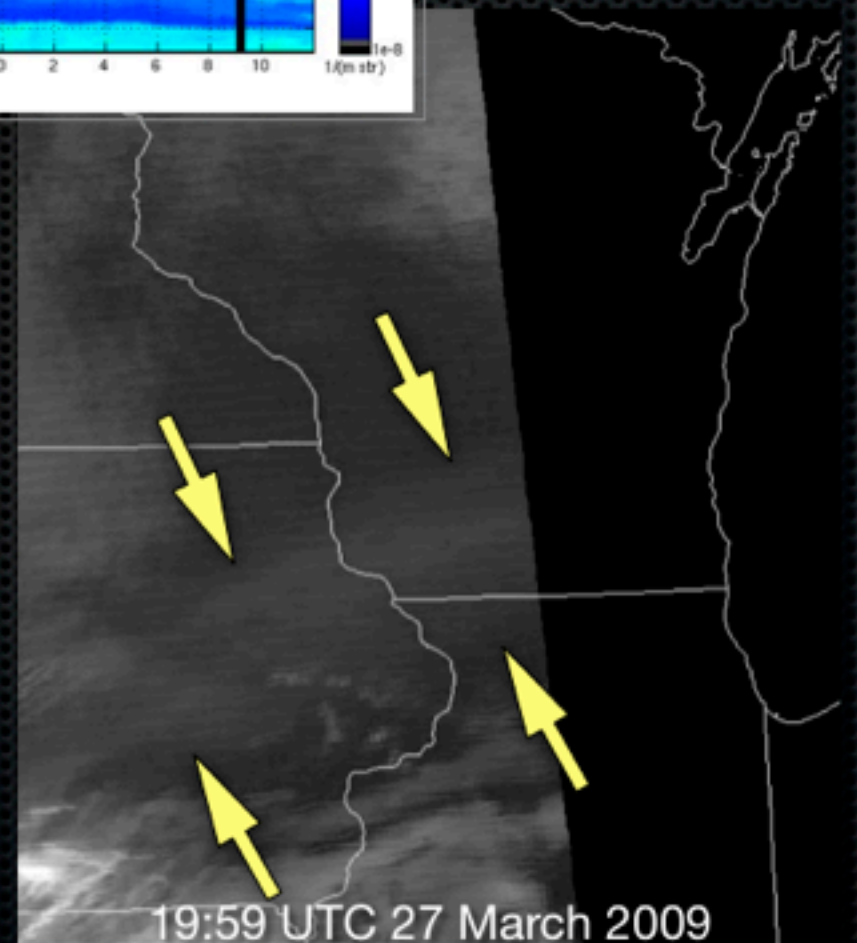
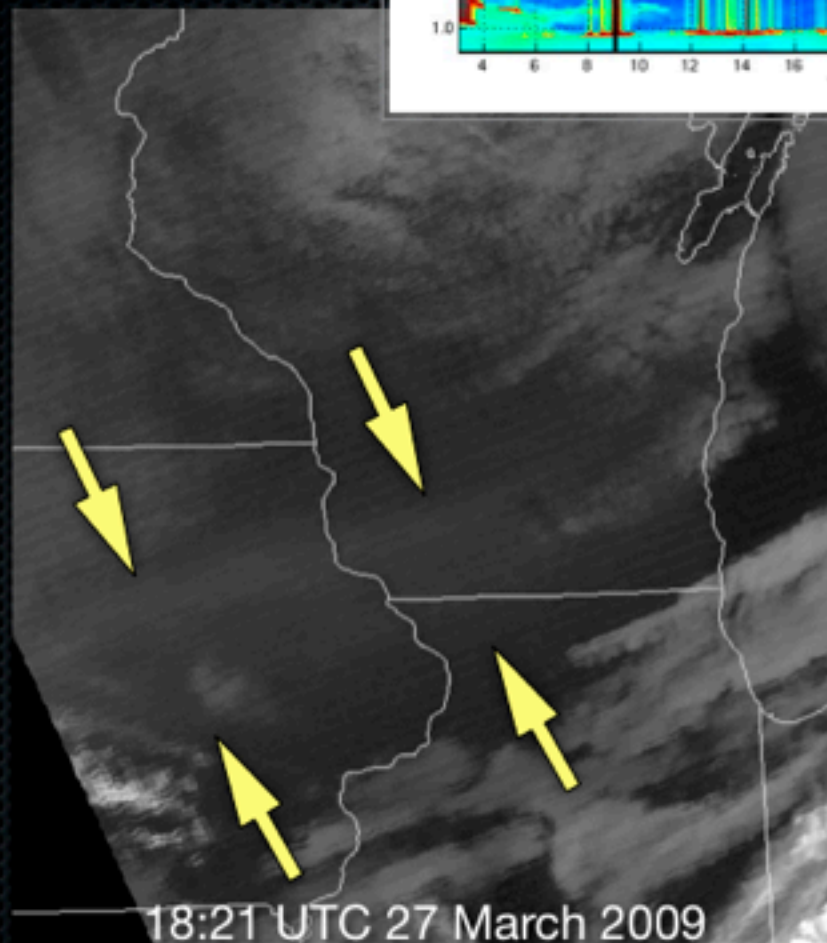


# MODIS 1.6 $\mu$ m Cirrus Channel





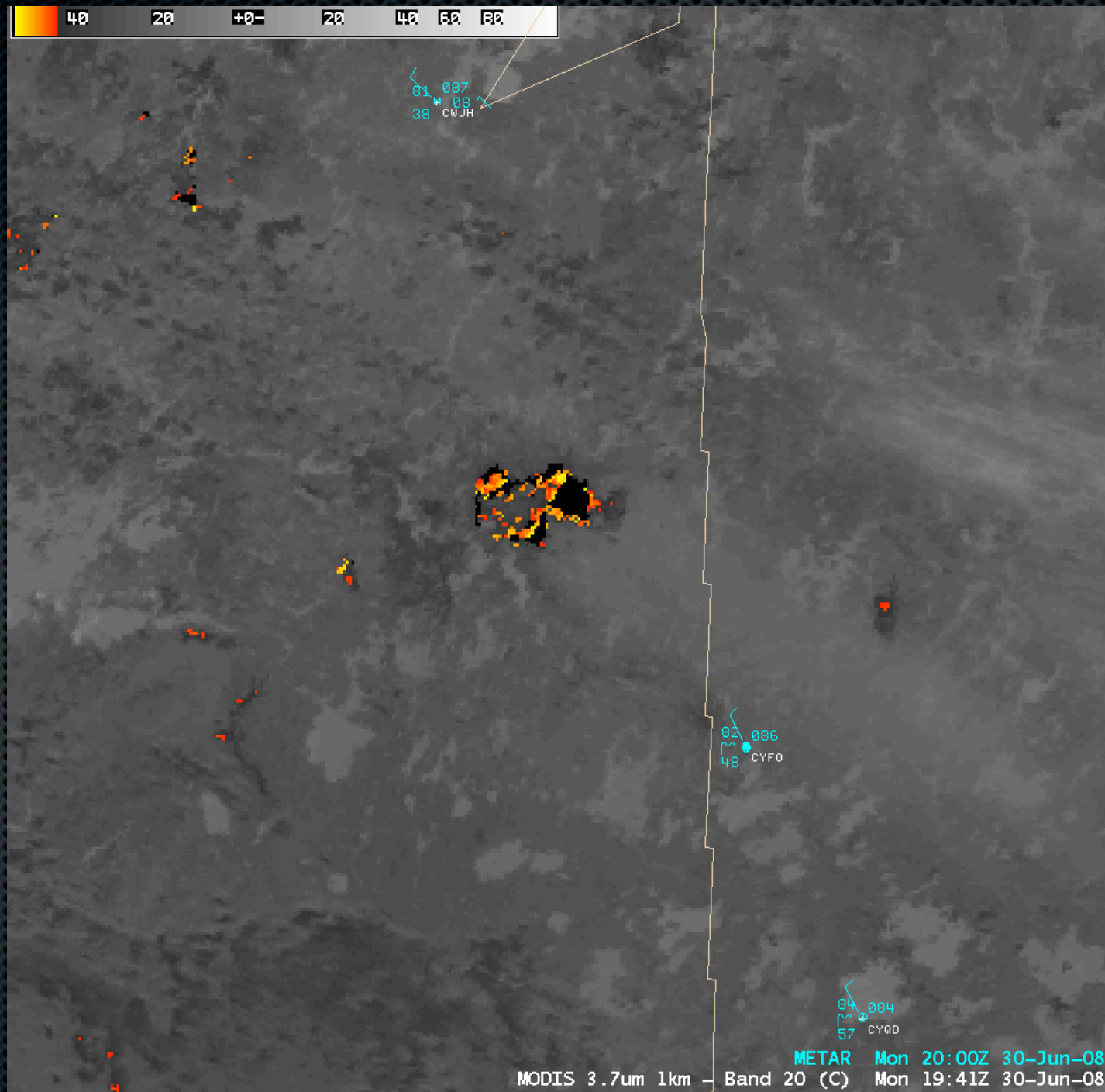
Ground-based lidar  
aerosol backscatter  
(SSEC / UW-Madison)



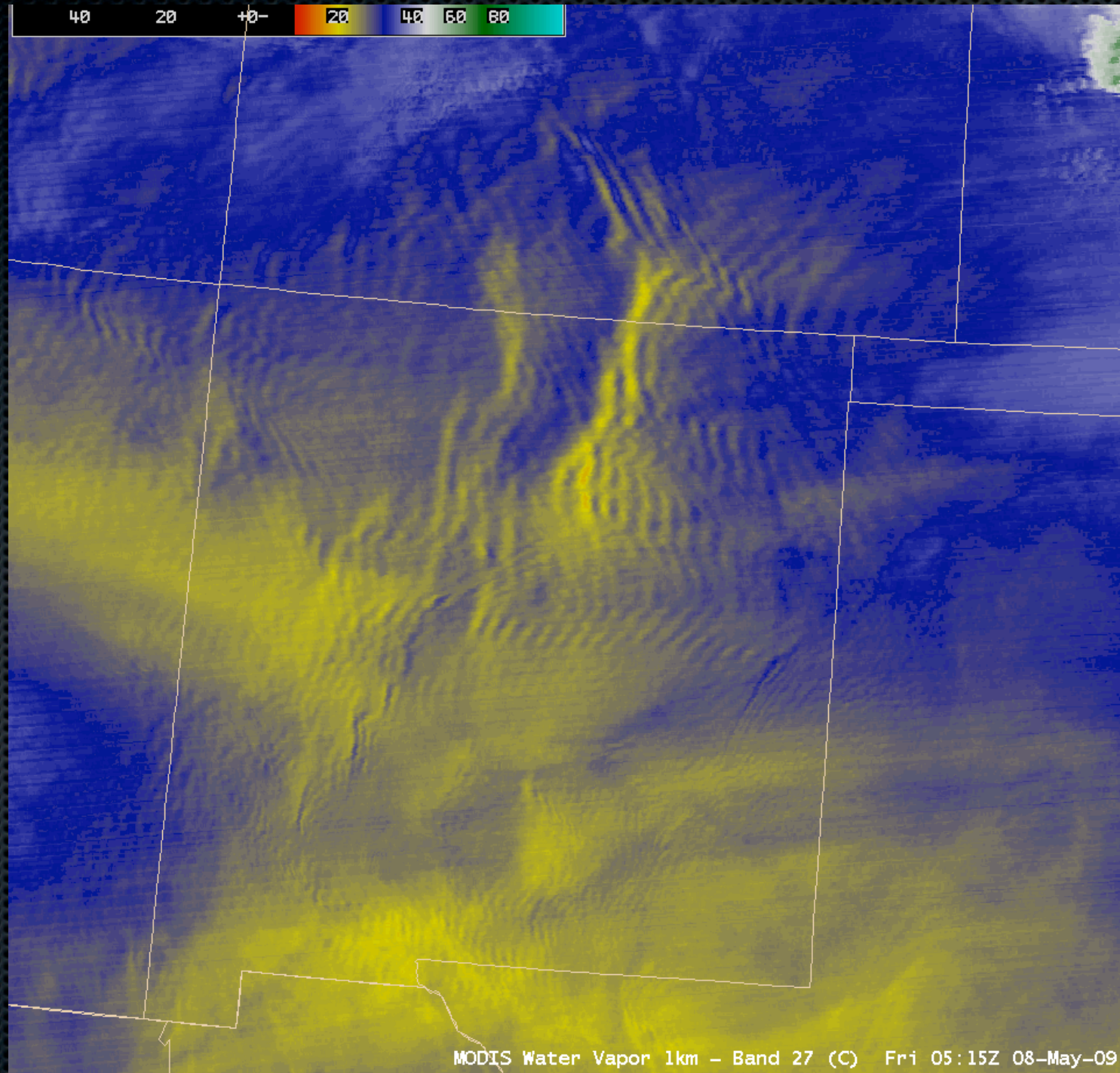
AWIPS images of MODIS Band 26 (1.3 $\mu$ m) "Cirrus detection" channel



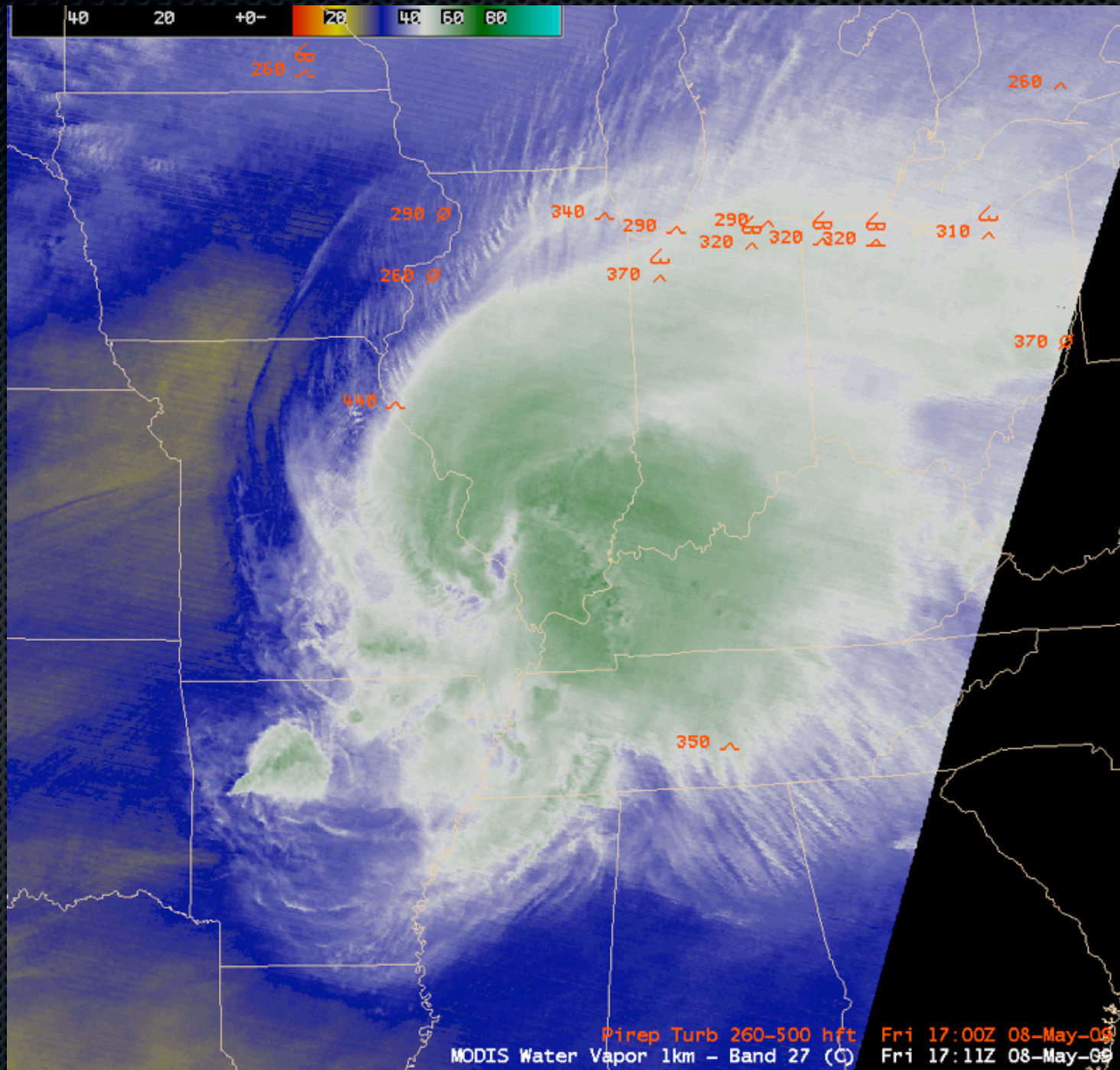
# MODIS 3.7 $\mu$ m Shortwave IR Channel



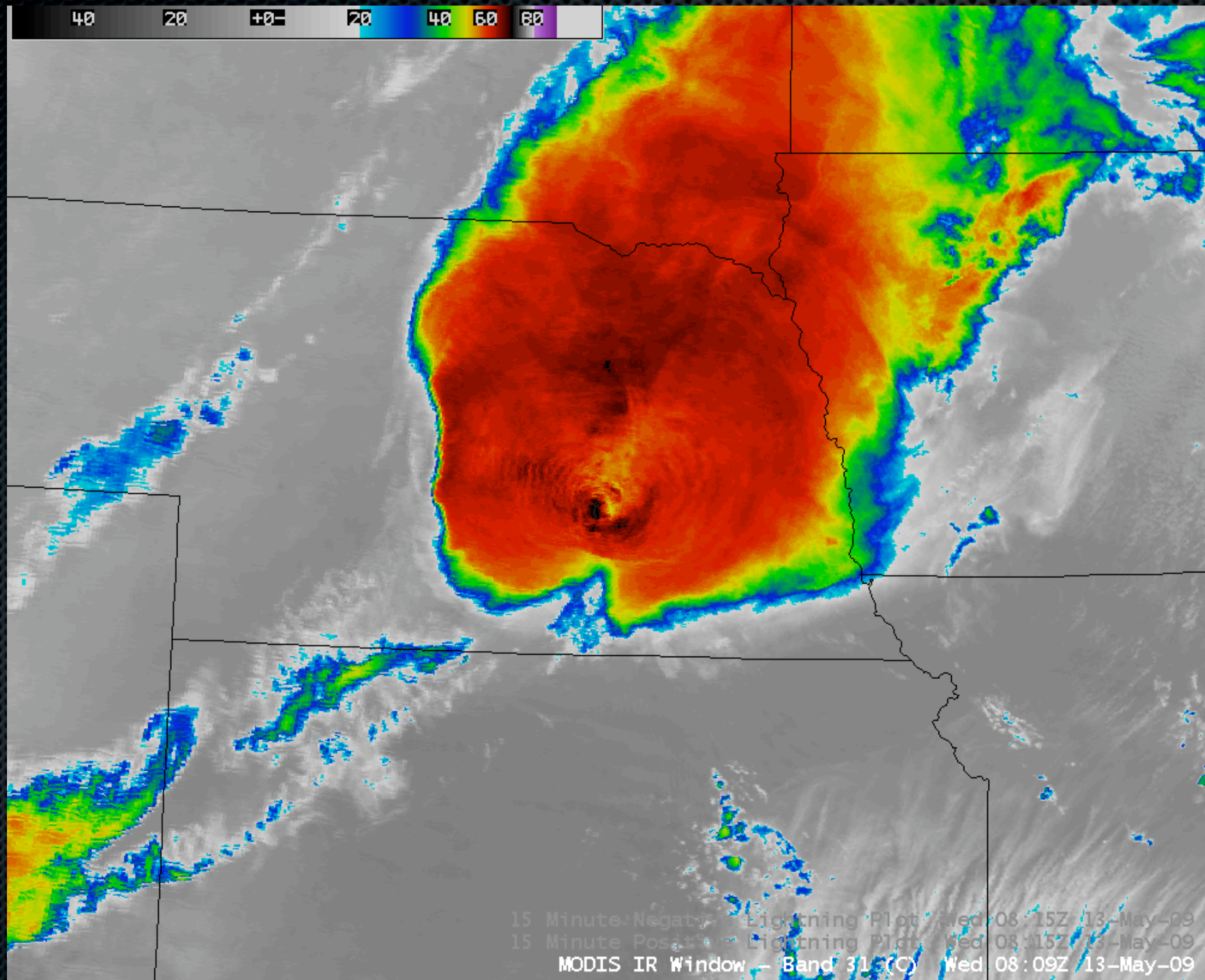
# MODIS 6.7 $\mu$ m Water Vapor Channel



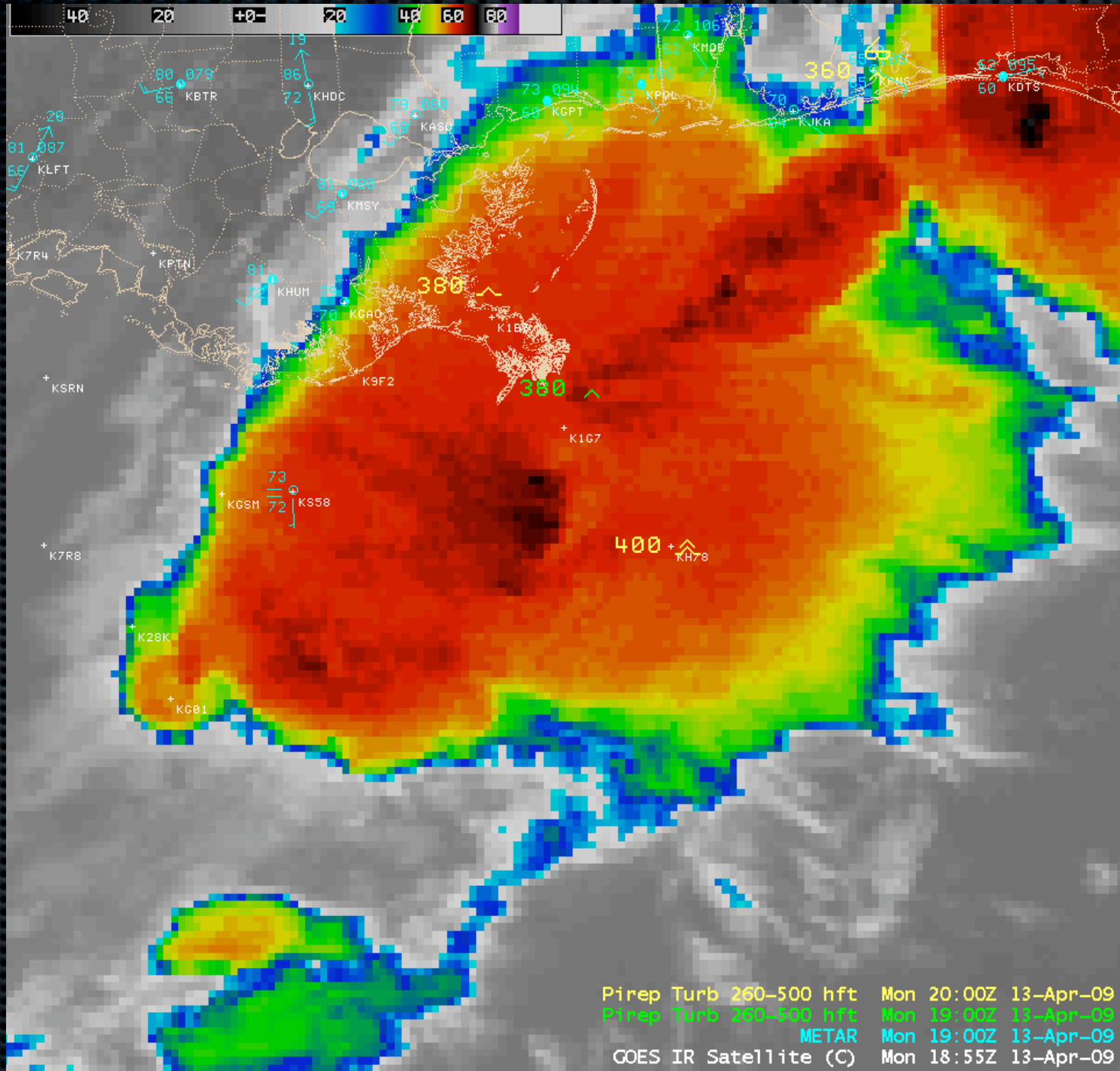
# MODIS 6.7 $\mu$ m Water Vapor Channel



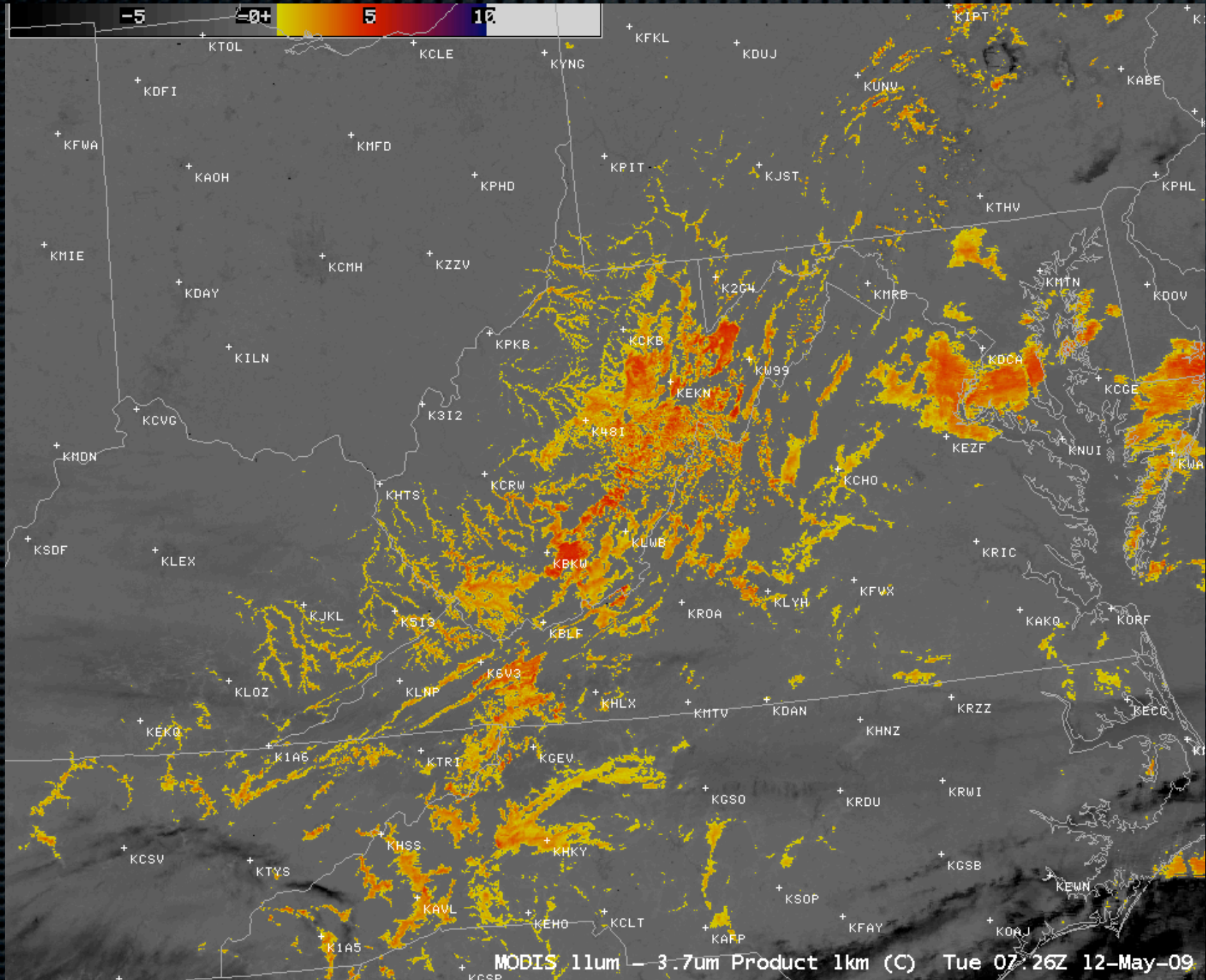
# MODIS 11.0μm IR Window Channel



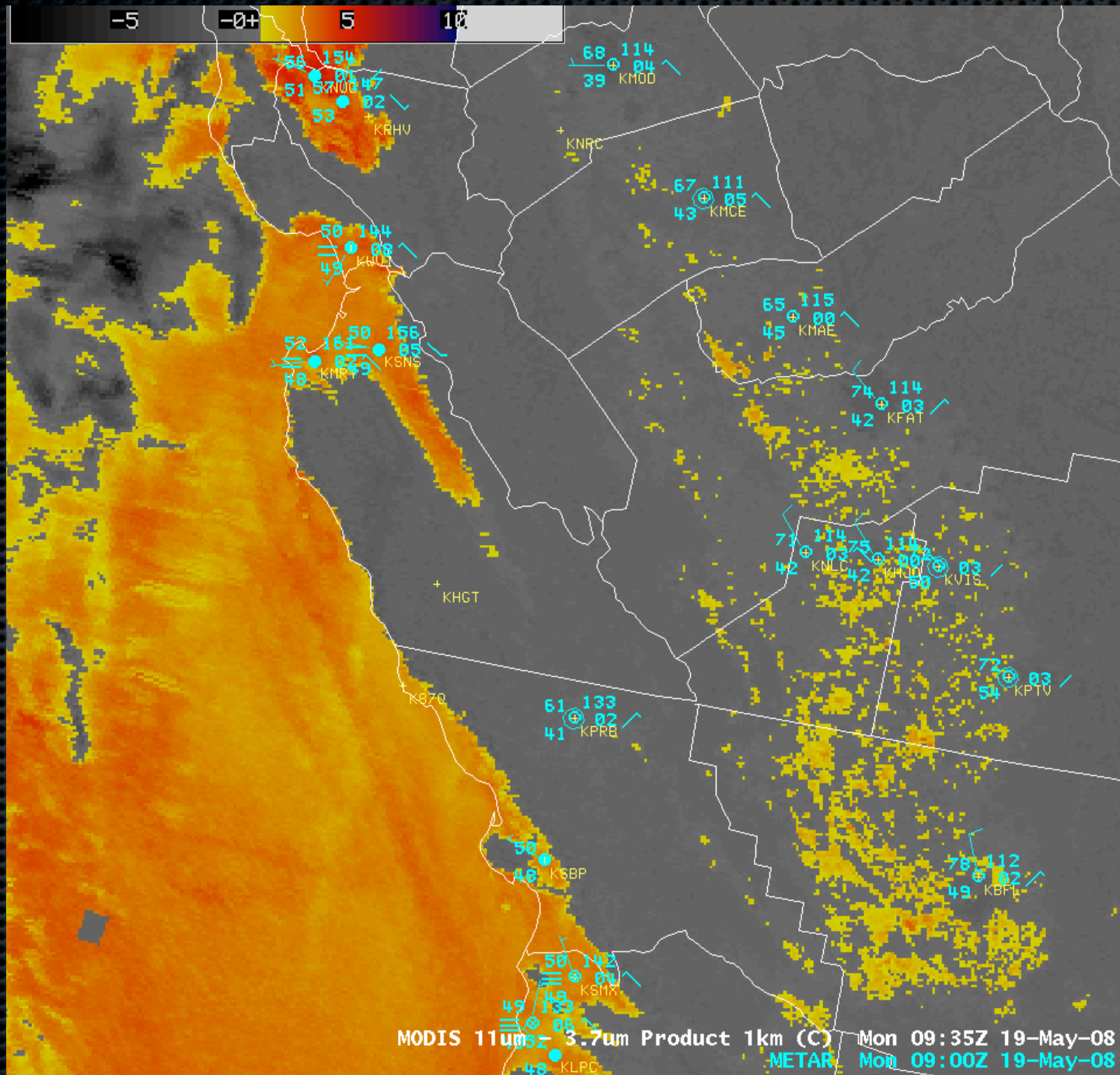
# MODIS 11.0μm IR Window Channel



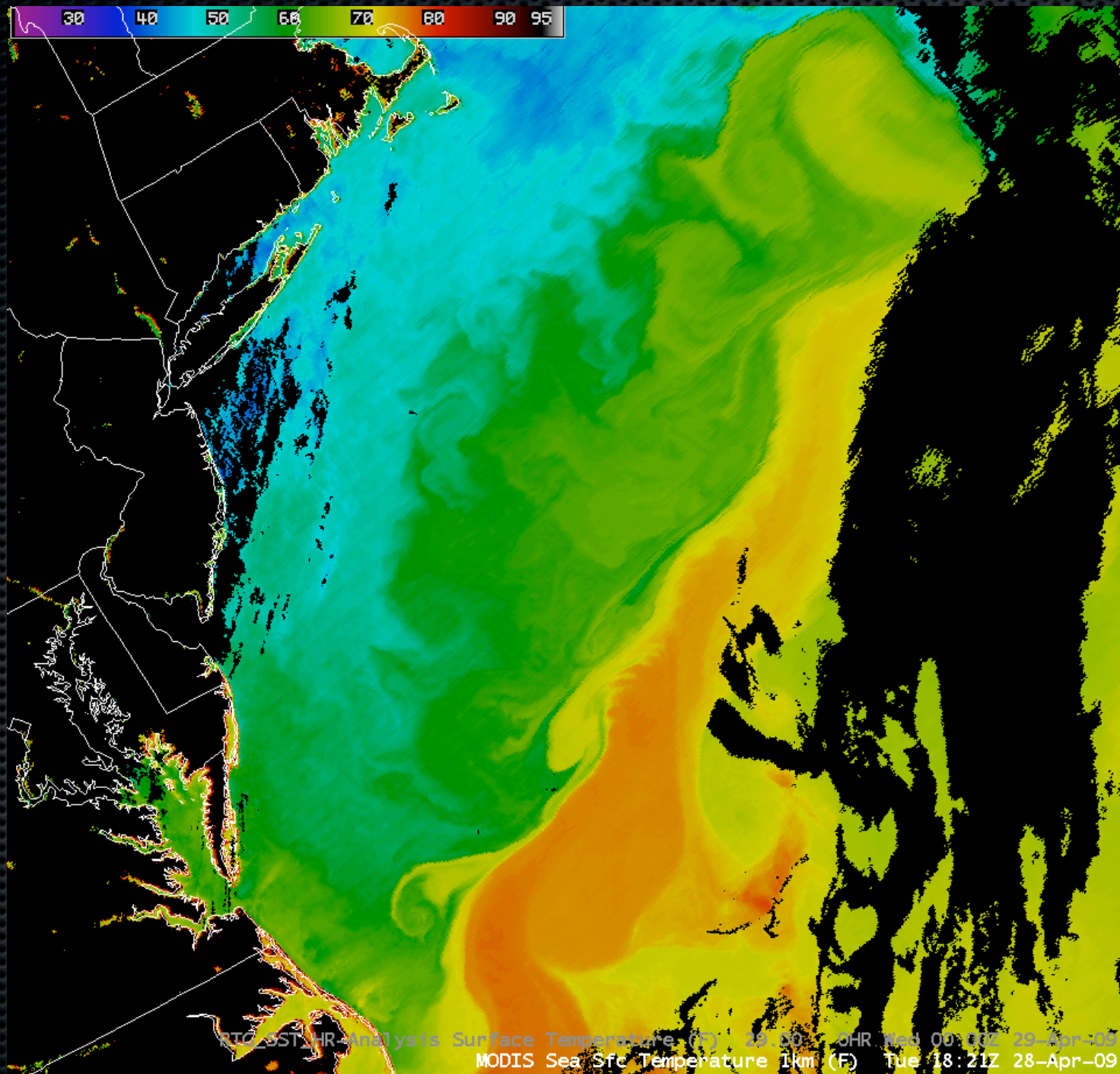
# MODIS Fog/Stratus Product



# MODIS Fog/Stratus Product

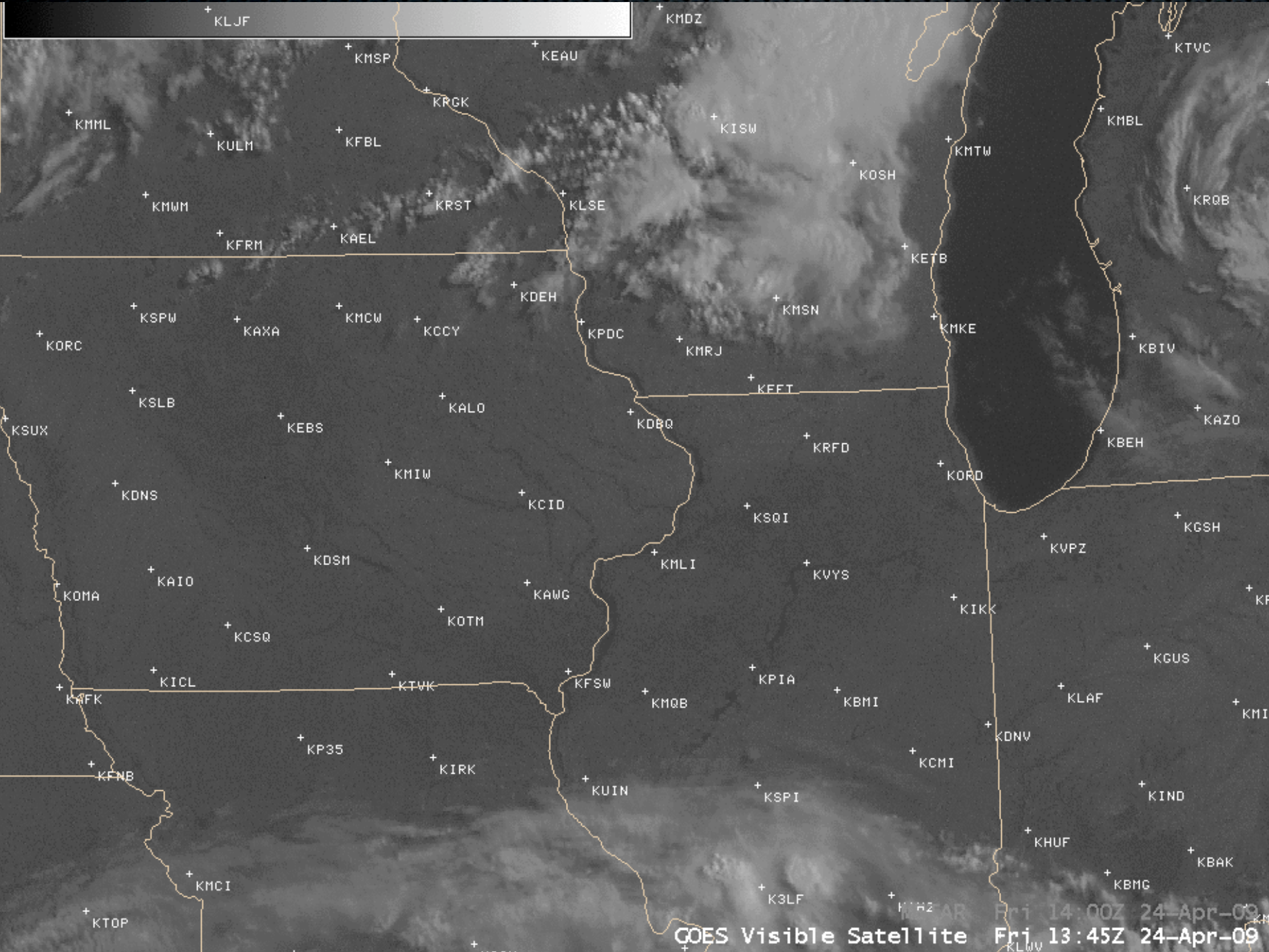


# MODIS Sea Surface Temperature

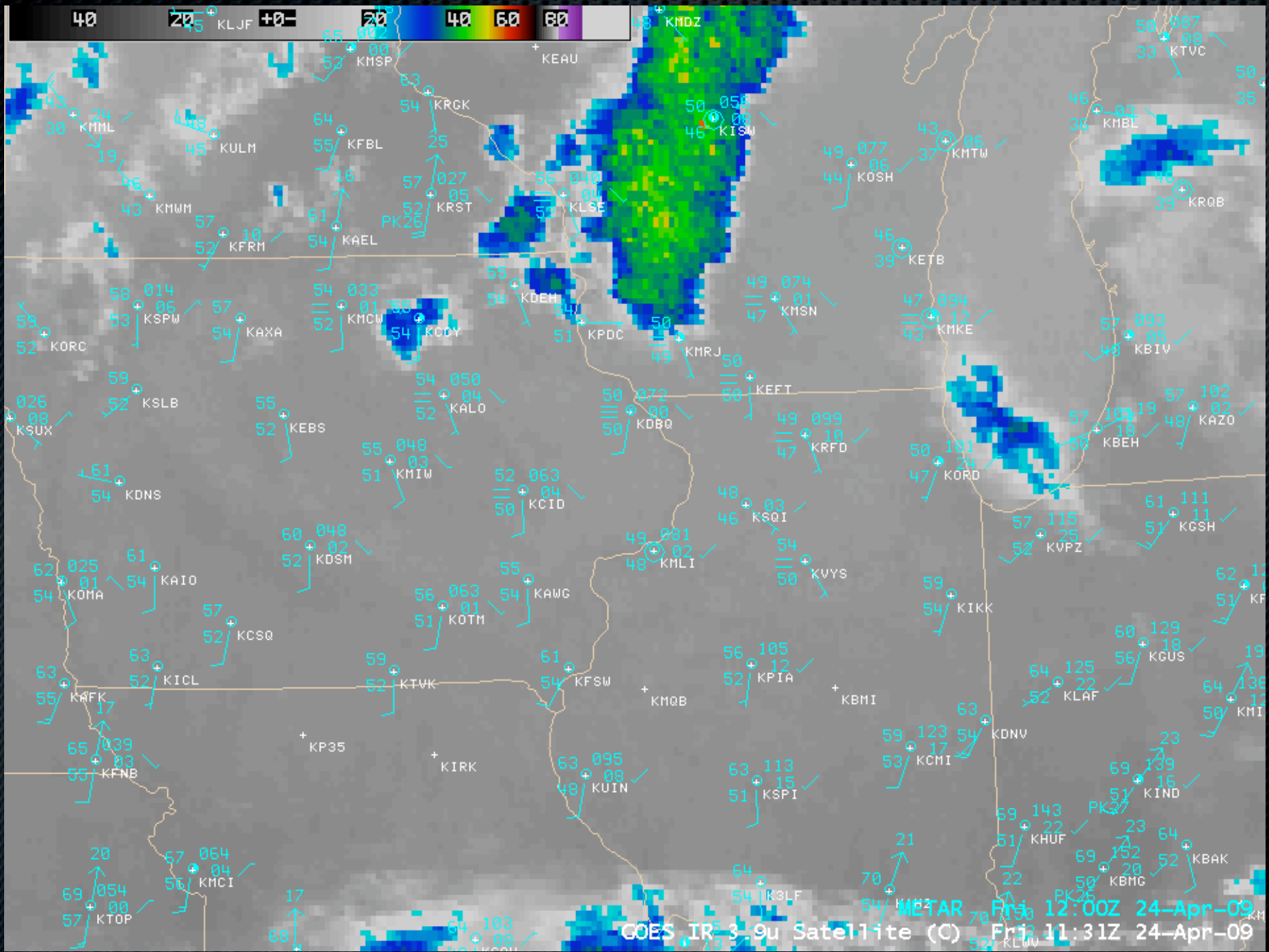




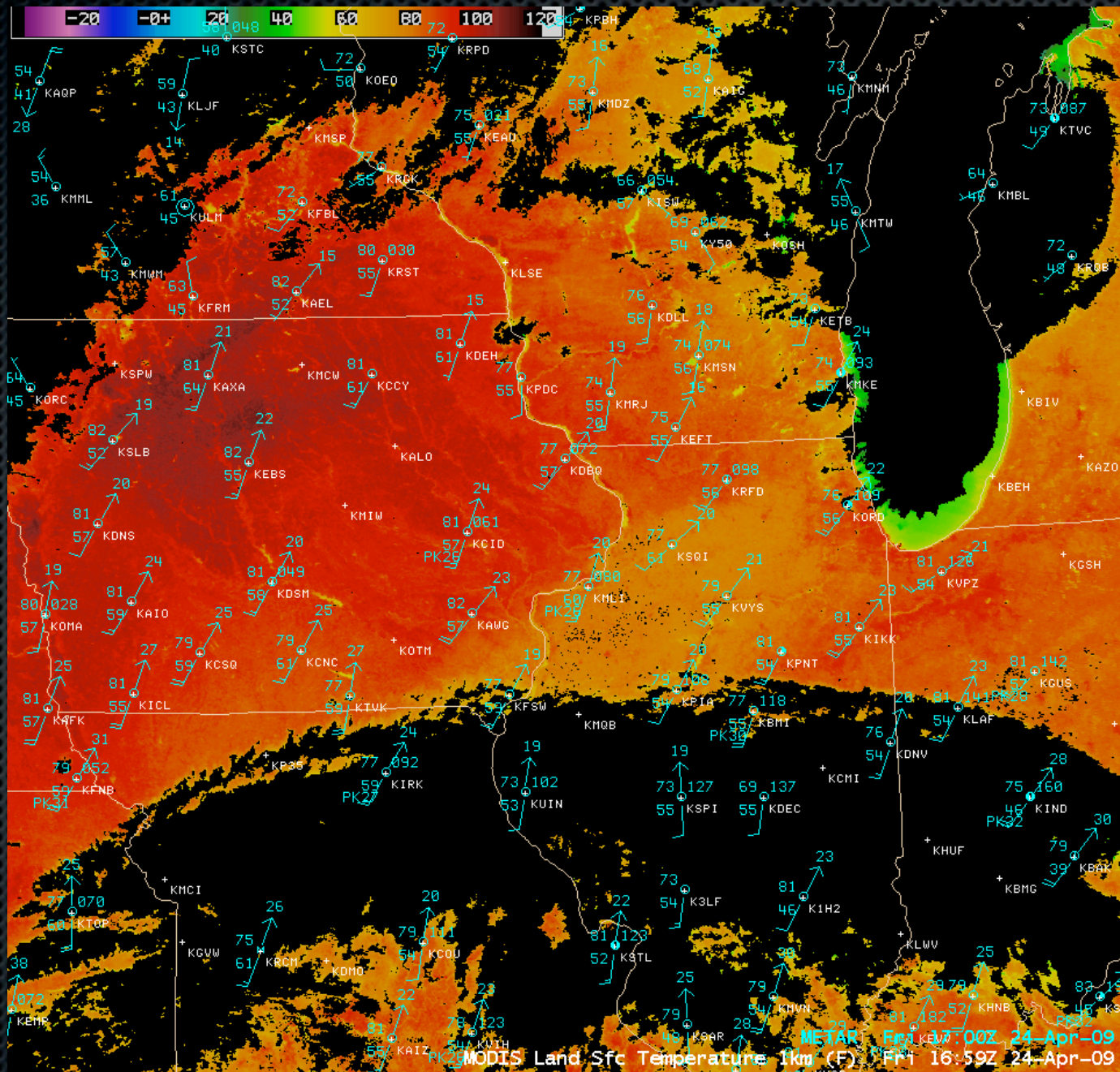
# Land Surface Characterization



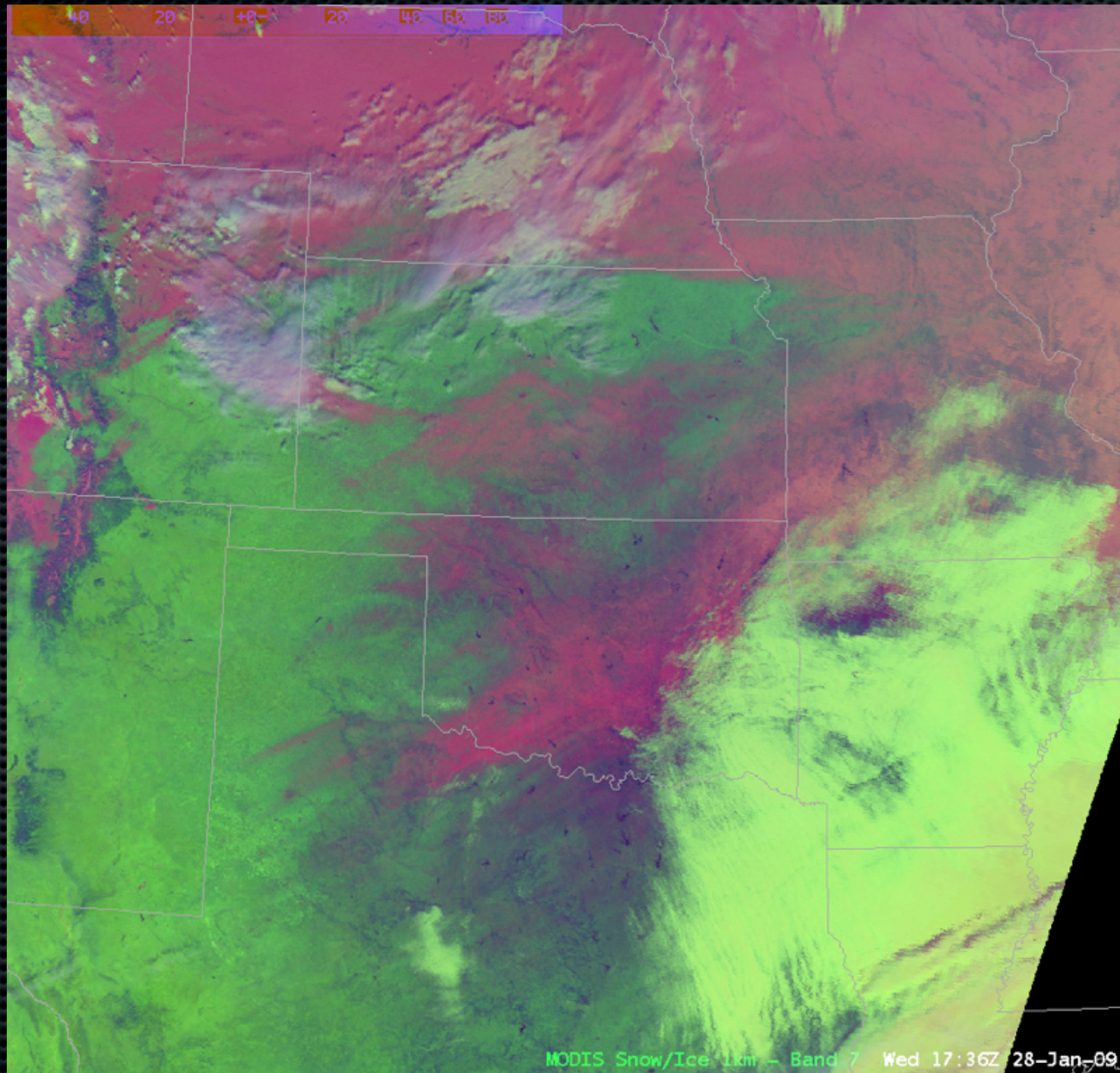
# Land Surface Characterization



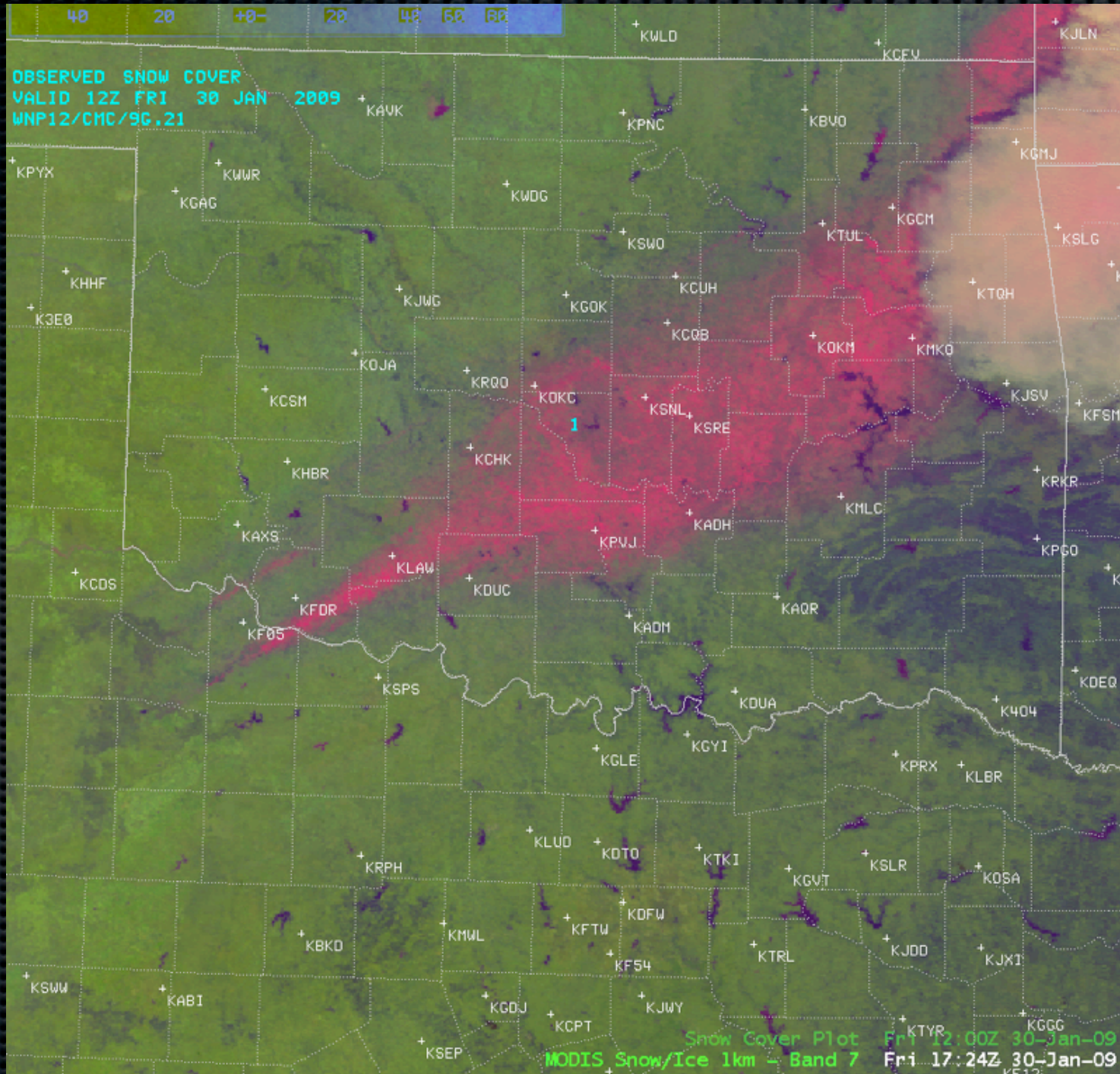
# MODIS Normalized Difference Vegetation Index and Land Surface Temperature



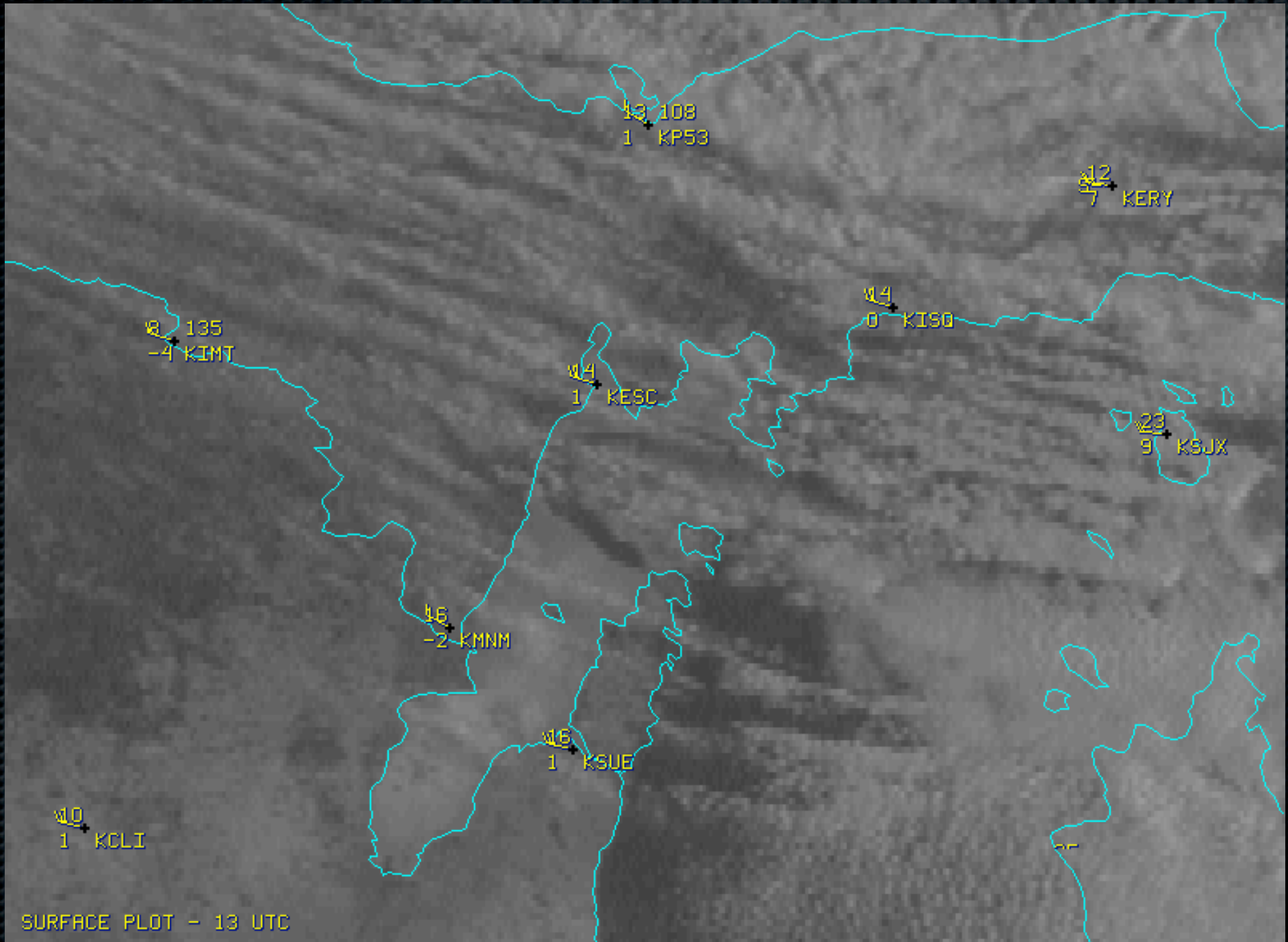
# AWIPS RGB Images



# AWIPS RGB Images



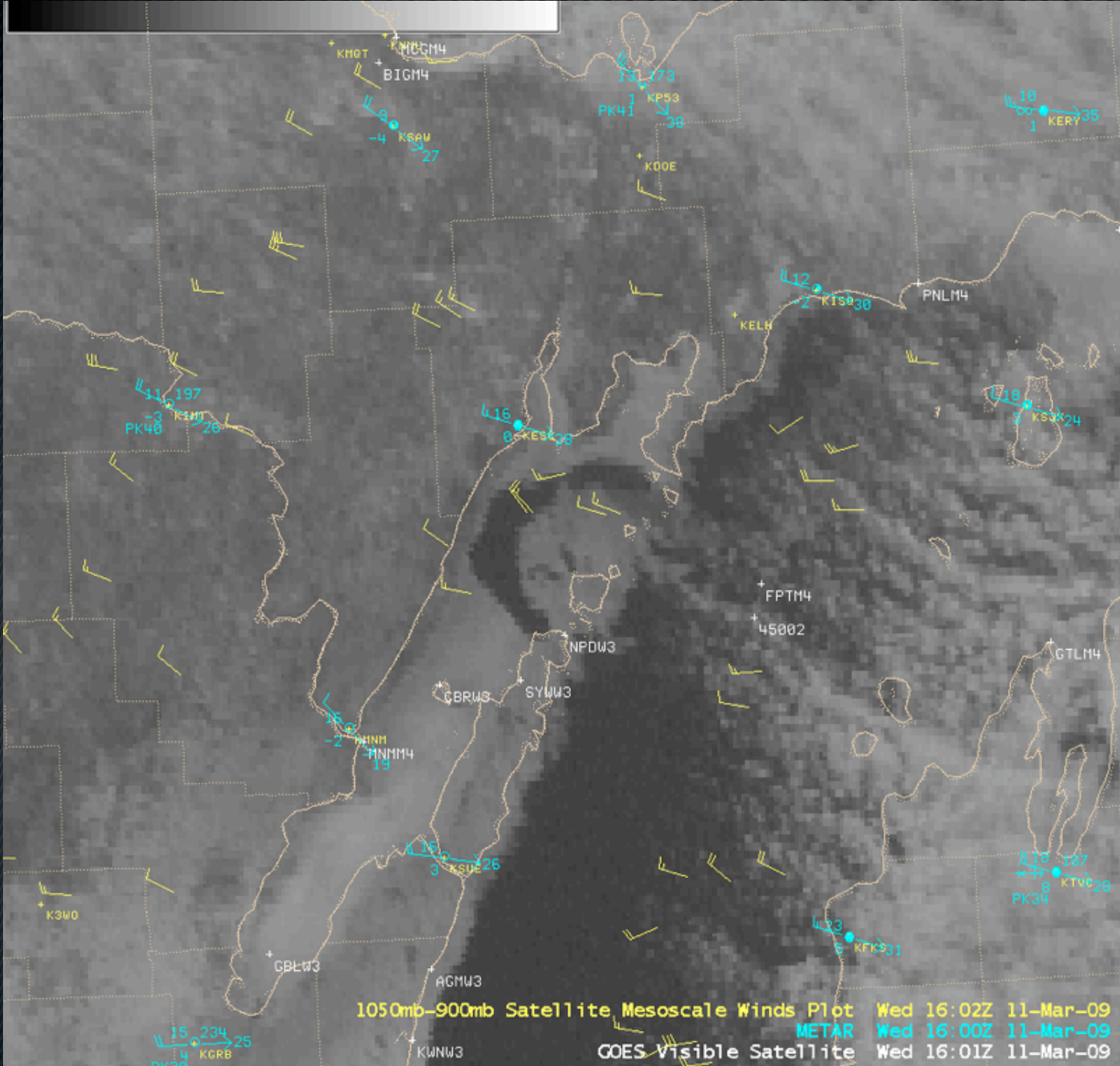
# GOES-13 Visible Channel



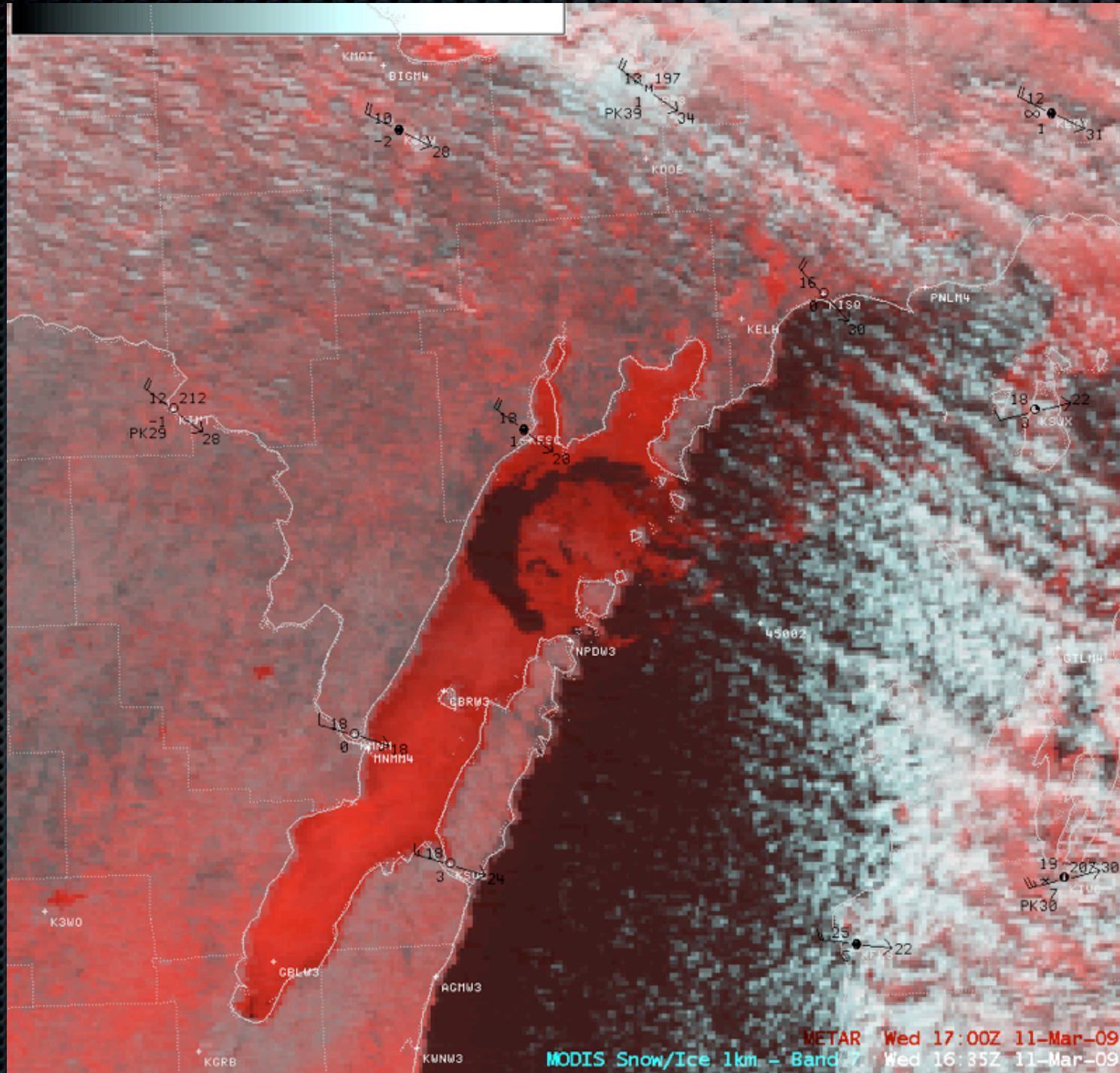
SURFACE PLOT - 13 UTC

GOES-13 IMAGER - VISIBLE (CHANNEL 01) - 13:15 UTC 11 MARCH 2009 - CIMSS

# CIMSS Mesoscale Winds



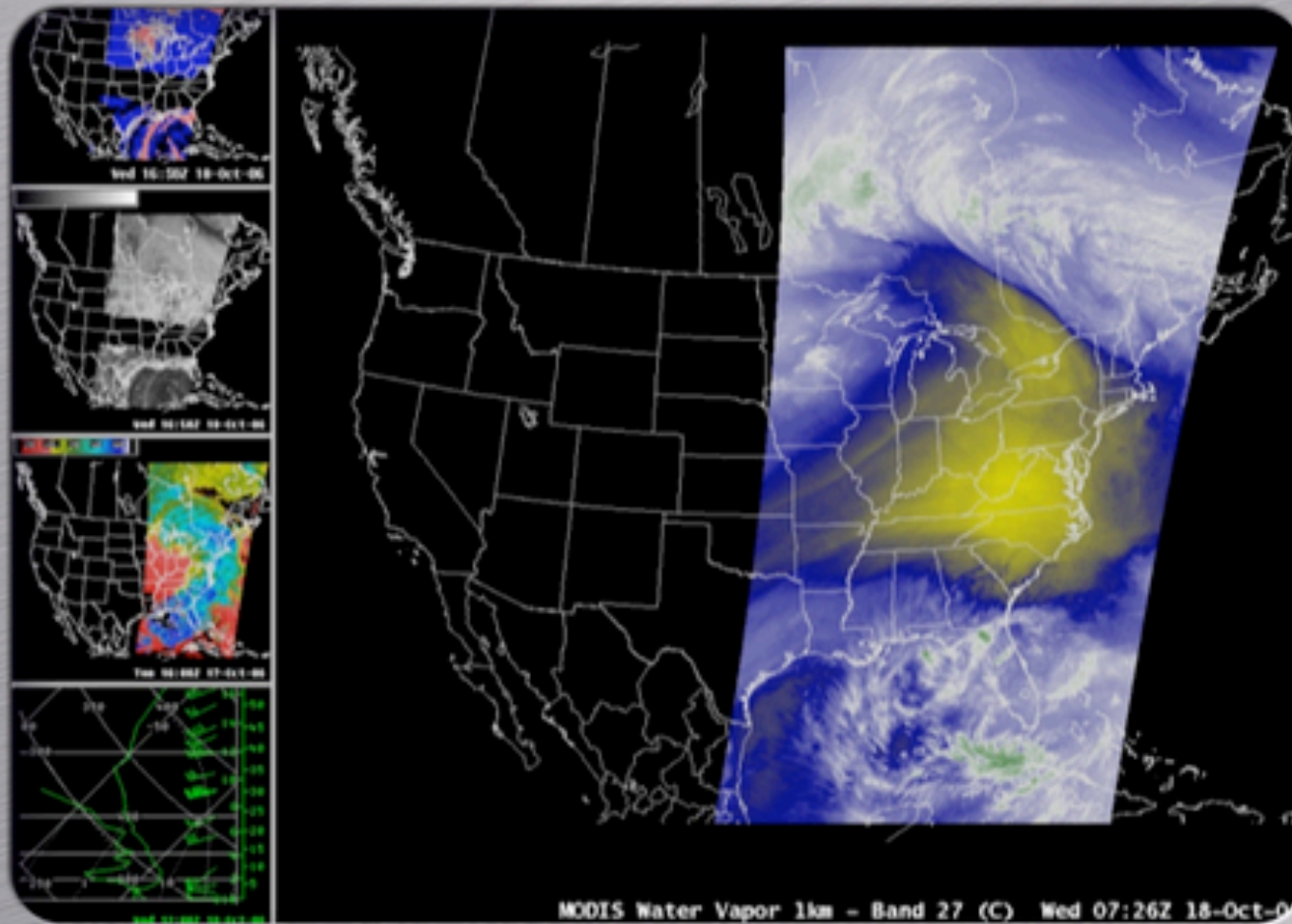
# AWIPS RGB Images





# VISIT Distance Learning Module

## MODIS Products in AWIPS



National Weather Service • Integrated Sensor Training Professional Development Series  
Virtual Institute for Satellite Integration Training

