

MODIS in AWIPS Version 1.2 Upgrade Instructions

This is an mandatory upgrade for all participating sites that may be performed at any time. There was a change made to the MODIS data feed effective October 2006.

The Cooperative Institute for Meteorological Satellite Studies (CIMSS) has changed the color scale and enhancement for the MODIS Cloud Top Temperature (CTT) product. Additionally, there is a new color table for the MODIS Total Precipitable Water (TPW) product to facilitate direct comparison with GOES Sounder TPW. The former modification requires a change to ingesting offices' AWIPS D-2D to assure the product is displayed accurately. The latter modification is optional, and depends on office forecaster preference, but is advised. The file names of the products have not changed. There are no additional images or products with this upgrade.

Allow up to forty-five minutes for this upgrade. There is no obligation to upgrade. Weather Forecast Offices affected include NWS Davenport, IA, NWS La Crosse, WI, NWS Milwaukee/Sullivan, WI, and NWS Riverton, WY. Other offices who have not registered may also be affected. Do not delay in performing this upgrade.

Similar to what you did on the initial installation, use the two Perl scripts included with color table manipulation package `manage-ct.tar` (included again with no modifications) to extract the new CTT and TPW (optional) color tables from SSEC's `ModisColors.nc` (not `ModisColors.nc.old`) and add into `customColorMaps.nc` as located in `/data/fxa/workFiles`. The `manage-ct.tar` file can be extracted into a temporary location of choice. Refer to `instructions.txt` for information about how to use the utility. It might be a good idea to backup the initial version of `customColorMaps`.

The system modifications which need to be performed at each forecast office which currently receives imagery for the eastern United States include:

- Go to the `/data/fxa/customFiles` directory.
- For `[LLL-]localDepictKeys.txt`, where LLL is your WFO identifier, use vi or your favorite text editor to modify the last column of keys 7360 (TPW) and 7362 (CTT) so that it matches the number of the table in `customColorMaps`.
- For `[LLL-]localImageStyle.txt`, where LLL is your WFO identifier, use vi or your favorite text editor to modify the following entry:
"7362 | |26.84 10|20.|10.|0.|-10.|-20.|-30.|-40.|-50.|-60.|-73.16 250"
"7362 | |30. 10|20.|10.|0.|-10.|-20.|-30.|-40.|-50.|-60.|-70.|-80.|-90.|-100. 250"
- Perform a localization with '-tables' on all workstations and PX1
- Restart the D-2D to verify the change
 - If unsuccessful, try the localization again with '-f'

As a reminder, CIMSS/SSEC welcomes your suggestions as to how we can improve the MODIS in AWIPS project. If you have comments, please contact Kathy Strabala, kathys@ssec.wisc.edu.

The system modifications which need to be performed at each forecast office which currently receives imagery for the western United States include:

- Go to the /data/fxa/customFiles directory.
- For [LLL-]localDepictKeys.txt, where LLL is your WFO identifier, use vi or your favorite text editor to modify the last column of keys 7380 (TPW) and 7382 (CTT) so that it matches the number of the table in customColorMaps.
- For [LLL-]localImageStyle.txt, where LLL is your WFO identifier, use vi or your favorite text editor to modify the following entry:
“7382 | |26.84 10|20.|10.|0.|-10.|-20.|-30.|-40.|-50.|-60.|-73.16 250” to
“7382 | |30. 10|20.|10.|0.|-10.|-20.|-30.|-40.|-50.|-60.|-70.|-80.|-90.|-100. 250”
- Perform a localization with '-tables' on all workstations and PX1
- Restart the D-2D to verify the change
 - If unsuccessful, try the localization again with '-f'

Did you know?

CIMSS/SSEC also provides other additional satellite-related products for AWIPS.
Visit <http://cimss.ssec.wisc.edu/~jordang/awips.html> for more information.

For questions regarding this change, please contact:

Jordan Joel Gerth

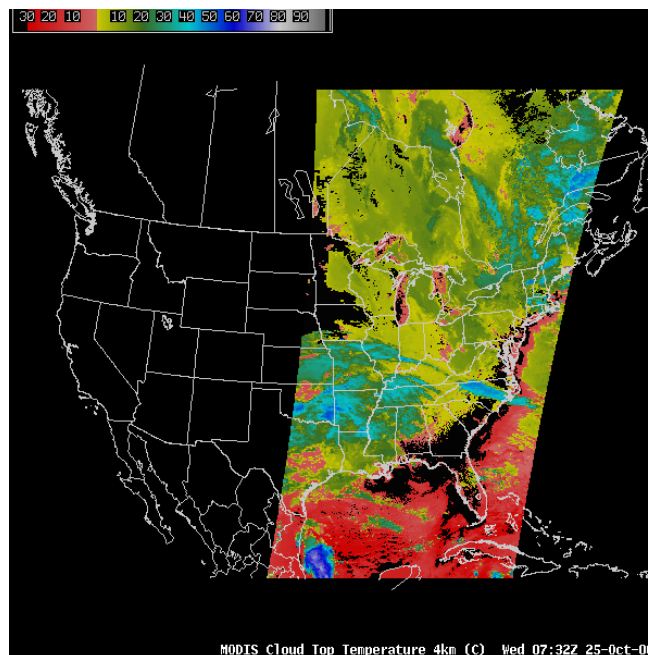
Project Maintenance Programmer, CIMSS/SSEC
jordang@ssec.wisc.edu, jordan.gerth@noaa.gov



Project web site: <http://cimss.ssec.wisc.edu/~jordang/awips-modis/index.html>

Announcement release date and time: Thursday, October 26, 2006, 2:40 PM CDT

Sample Image



New MODIS CTT